



**Te Kaunihera Rata  
o Aotearoa**

---

Medical Council  
of New Zealand

# The New Zealand Medical Workforce in 2022

## Contents

Foreword .....	3
Introduction and acknowledgements .....	4
Key findings .....	4
Key figures .....	4
Key terms and definitions.....	5
Ethnicity.....	6
Gender .....	11
Changes in the medical workforce .....	16
Work type .....	19
Workloads.....	22
Geographic distribution.....	27
International medical graduates .....	33
Retention — how long do our doctors stay .....	35
Data sources used in this publication.....	40
Representativeness of the survey data .....	40
Survey method .....	43
Explanation of terms used.....	45
More information.....	47
Appendix 1 – Changes in the medical workforce by work role .....	48
Appendix 2 – Work type .....	49
Appendix 3 – Age.....	50
Appendix 4 – Ethnicity by work type .....	52
Appendix 5 – Retention of New Zealand graduates.....	54
Appendix 6 – List of tables and figures.....	55

## Foreword

E tangi mai nei hoki te Matuhi  
*"Tui, tuia, tuituia"*  
e whakakoia nei hoki te Huia  
*"Koia, koia"*  
e tangi mai nei hoki te Huia,  
*"Hui, huihuia,"* - Paura Potangaroa (1881)

In a year of ongoing health system pressures and medical workforce challenges, Te Kaunihera Rata o Aotearoa I Medical Council of New Zealand (The Council) is pleased to present the results of 2022 Workforce Survey.

This report is drawn together from the feedback gathered in the workforce survey that each doctor completes when applying for a practising certificate (PC).

The total number of doctors practising (18,780) continues to increase. There has been further growth in the number and percentage of Māori (4.6), Pasifika (2.2) and women (47.4) doctors. The number of international medical graduates (IMGs) has increased with over 1,000 doctors registered from overseas in the year ending June 2022. This reflects the high demand for doctors, unable to be met through local training and retention, and is facilitated by the many accessible registration pathways for IMGs.

I would once again like to thank all the doctors who completed the survey through the annual practising certificate application, and thus for this important contribution to understanding the demographics, work practices, and distribution of doctors in Aotearoa. I also again thank all members of the medical profession for the work they do in service of New Zealanders, providing compassionate, competent healthcare up and down the motu to patients, whānau and communities.

We trust the workforce survey will be of interest and use to many organisations and individuals. Council welcomes your feedback on the report ([workforce@mcnz.org.nz](mailto:workforce@mcnz.org.nz)), including what information you would like to see presented in future editions.

Noho ora mai

Dr Curtis Walker



**Chairperson**

**Te Kaunihera Rata o Aotearoa I Medical Council of New Zealand**

## Introduction and acknowledgements

This report presents the results of the Medical Council of New Zealand workforce survey for 2022. Andrew Cullen, Senior Information Systems Analyst prepared the report.

We would like to thank all the doctors who responded to the survey and provided valuable data on the type and amount of work they are doing.

## Key findings

- **The proportion of Māori doctors increased**  
4.6 percent of doctors identified as Māori. This is the highest proportion observed to date and is double the 2000 level (2.3 percent). However, Māori make up 16.5 percent of the population, so there is still much work needed to achieve a Māori medical workforce proportionate to population and need.
- **The proportion of female doctors increased**  
47.4 percent of doctors in the active workforce were female, up almost a percentage point from 2021. We predict that women will outnumber men in the workforce by 2025.
- **The number of practising doctors increased**  
The total number of doctors on the register with practising certificates increased by 2.9 percent in 2022 from 18,247 to 18,780.
- **The average age for doctors decreased slightly; doctors are more evenly distributed across age groups than they used to be**  
The average age of the workforce dropped to 45.3 years in 2022. The peaks we observed in the 45-49 and 50-54 age groups in 2010 and 2015 have now flattened out.

## Key figures

Measure	2016	2017	2018	2019	2020	2021	2022
Size of the workforce <sup>1</sup>	15,212	15,819	16,292	16,908	17,671	18,247	18,780
Doctors per 100,000 population <sup>2</sup>	321.3	327.9	333.5	344.7	347.6	357.2	366.7
Proportion of IMGs <sup>3</sup> (%)	40.4	40.0	40.1	40.4	40.2	41.2	41.2
Proportion of females (%)	43.9	44.8	45.1	46.3	46.9	46.5	47.4
Average age of workforce	45.5	45.9	46.1	46.0	45.9	45.4	45.3
Average weekly workload (hours)	44.7	44.2	43.8	44.5	44.1	44.4	44.5
Average proportion of new IMGs retained after 1 year <sup>4</sup>	57.7	58.4	59.1	59.7	60.5	-	-

<sup>1</sup> Figure is based on registration data. See Table 4 for more information.

<sup>2</sup> Figures are based on the size of the workforce as measured by registration data (see Table 4) and Statistics New Zealand's estimated residential population as of 31 March of the particular survey period.

<sup>3</sup> IMG: international medical graduate (see page 45 for definition). Figures are based on doctors who responded to the survey.

<sup>4</sup> See 'Retention' on page 35 for more information and 'Survey method' on page 40 for information on how this figure was calculated.

## Key terms and definitions

Here are some of the key terms used in this publication, and their definition. Please see page 45 for the full list.

### General practitioner (GP)

A GP is any respondent who indicated working in the GP work role at one of their work sites. It does not specifically refer to a doctor holding the FRNZCGP qualification or a vocational scope of general practice. We sometimes need to use a different definition of GP. We will specify that we have done this in the text.

### Specialist

This work role category is generally understood to require membership of the relevant specialist college (and registration within a vocational scope of practice). However, the data are self-reported and doctors who respond to the survey may apply the term more broadly. General practice is a specialty, and GPs are specialists. However, we ask doctors working in general practice, urgent care and other primary care disciplines to use separate work role categories to help us analyse the data.

### Registrar

A doctor who has at least 2 years of experience since graduation from medical school. Registrars are generally undertaking vocational training in their chosen specialty.

### House officer

House officers are doctors in their first 2-to 3 years out of medical school. Doctors in their first year out of medical school are sometimes known as interns or PGY1s.

### International medical graduate (IMG)

We define IMGs as doctors who obtained their primary medical qualification in a country other than New Zealand.

Please take care when comparing the proportion of IMGs employed in New Zealand to the proportion in other countries – many countries define IMG differently from us.

## Ethnicity

### Changes in ethnicity of the workforce over time

The proportion of doctors who identify as Māori is 4.6 percent. This is up from 3.4 percent in 2015 and 3.0 percent in 2010. The proportion of Pasifika doctors is 2.2 percent – up slightly from 2015 (2.0 percent) and up by 0.8 percentage points from 2010 (1.3 percent).

The proportion of NZ European/Pākehā doctors is decreasing. Three-quarters of doctors identified as NZ European/Pākehā in 2000 but this figure was down to just under 46 percent in 2022.

**Table 1: Proportion of doctors by ethnic group (%)**

Ethnicity	2000	2005	2010	2015	2020	2022
Māori	2.3	2.6	3.0	3.4	4.1	4.6
Pacific Island (Pasifika)	1.1	1.5	1.3	2.0	1.9	2.2
Chinese	4.5	5.4	5.3	5.9	6.3	6.6
Indian	4.5	5.1	5.9	6.0	5.8	6.2
Other non-European	7.6	10.8	9.9	11.9	10.5	11.8
Other European <sup>1</sup>	-	15.4	19.7	20.5	18.9	19.2
NZ European/Pākehā	76.5	57.5	53.3	51.4	49.4	45.7
Not answered	3.2	1.5	1.5	2.4	3.0	3.7
Refused <sup>2</sup>	0.2	0.2	0.2	-	-	-
<b>Total<sup>3</sup></b>	<b>100.0</b>	<b>100.0</b>	<b>100.0</b>	<b>100.0</b>	<b>100.0</b>	<b>100.0</b>

<sup>1</sup> In 2000, other European and NZ European/ Pākehā were combined in one category.

<sup>2</sup> From 2016, refused is no longer an available option.

<sup>3</sup> Individual categories may not add up to the total due to rounding.

### Proportion of doctors by ethnicity in the workforce compared with the New Zealand population

Māori and Pasifika are noticeably under-represented compared to their proportion of the population, even allowing for differences in method.<sup>1</sup> Māori make up 16.5 percent of the population, but only 4.6 percent of doctors. Just over eight percent of New Zealanders identify as Pasifika (8.1 percent) compared to 2.2 percent of doctors.

What would a representative workforce look like?

If the number of doctors reflected the makeup of the New Zealand population, there would be 3,129 Māori doctors and 1,540 Pasifika doctors. The results of the survey suggest there are currently about 872 Māori doctors and 417 Pasifika doctors<sup>2</sup>. This is a significant gap, but it is closing. We talk more about the developments in this area at graduate and undergraduate level in the next section.

<sup>1</sup> We use a prioritized count to assign a doctor to one ethnic group (see the survey method section on page 46), whereas Statistics New Zealand counts a person once for every ethnic group they identify with. Because of the way the Census results were published, it was not possible to find an equivalent figure for each group.

<sup>2</sup> Applying the percentages for each group in Table 2 to the number of registered doctors with a current practising certificate as of 31 March 2022 – 18,963.

**Table 2: Proportion of doctors and New Zealand population by ethnic group**

<b>Ethnicity<sup>1</sup></b>	<b>Proportion of doctors (2022)</b>	<b>Proportion of New Zealand population (2018 Census)<sup>2</sup></b>
Māori	4.6	16.5
Pacific Island (Pasifika)	2.2	8.1
NZ European/Pākehā	45.7	64.2
<b>Total<sup>3</sup></b>	<b>100.0</b>	<b>100.0</b>

<sup>1</sup> Proportions calculated including the other ethnicity categories not shown in the table. The table includes only these three categories for ease of reading.

<sup>2</sup> Figures based on the results of the 2018 Census published by Statistics New Zealand – see <https://www.stats.govt.nz/information-releases/2018-census-ethnic-groups-dataset>.

<sup>3</sup> Individual categories may not add up to the total due to rounding.

## Developments in the ethnicity of medical graduates

The information in this “Developments in the ethnicity of medical graduates” section is the same as presented in the 2021 report. Updated graduate information was not available at the time of publishing. We will update the figures in this section in the 2023 report.

While there is still a large gap in the representation of Māori and Pasifika doctors in the medical workforce, the proportion of Māori and Pasifika doctors is higher amongst more recently-qualified doctors, especially house officers. This reflects the progress that New Zealand’s medical schools are making at undergraduate and graduate levels to increase the numbers of Māori and Pasifika doctors entering the workforce.

### Ethnicity of undergraduates

15.3 percent of students beginning medical school between 2015 and 2019 identified as Māori. The proportion of students identifying as Māori was highest in 2018 (17.7 percent) and lowest in 2015 (12.1 percent).

The proportion of students identifying as Pasifika increased significantly between 2015 and 2019 – from 3.6 percent in 2015 to 9.7 percent in 2019. Overall, 7.2 percent of students beginning medical school between 2015 and 2019 identified as Pasifika<sup>3</sup>.

### Ethnicity of graduates

Otago University reported that, in 2020, they had 44 Māori graduates out of a total of 290 graduates (15.2 percent). In 2021, they had 62 Māori graduates out of a total of 287 graduates (21.6 percent). The equivalent figure for Pasifika were 7.9 percent in 2020 (23/290 graduates) and 6.6 percent in 2021 (19/287 graduates).

Auckland University reported that in 2020, 12.5 percent of graduates were Māori and 6.0 percent were Pasifika. In 2021, 13.7 percent of medical graduates were Māori, and 7.0 percent were Pasifika.

<sup>3</sup> New Zealand Medical Schools Outcomes Database (MSOD), *National report on students commencing medical school in New Zealand in 2015-2019*, <https://www.otago.ac.nz/medical-school/undergraduate/medicine/msod/>.

## Ethnicity by age

Doctors identifying as Māori, Pacific Island (Pasifika), and Chinese all have average ages lower than the overall figure. Māori doctors have the lowest average age for females – 37.3 years. Māori are also the youngest group amongst males – 39.7 years.

Male doctors identifying as NZ European/Pākehā are the oldest, on average – 51.5 years.

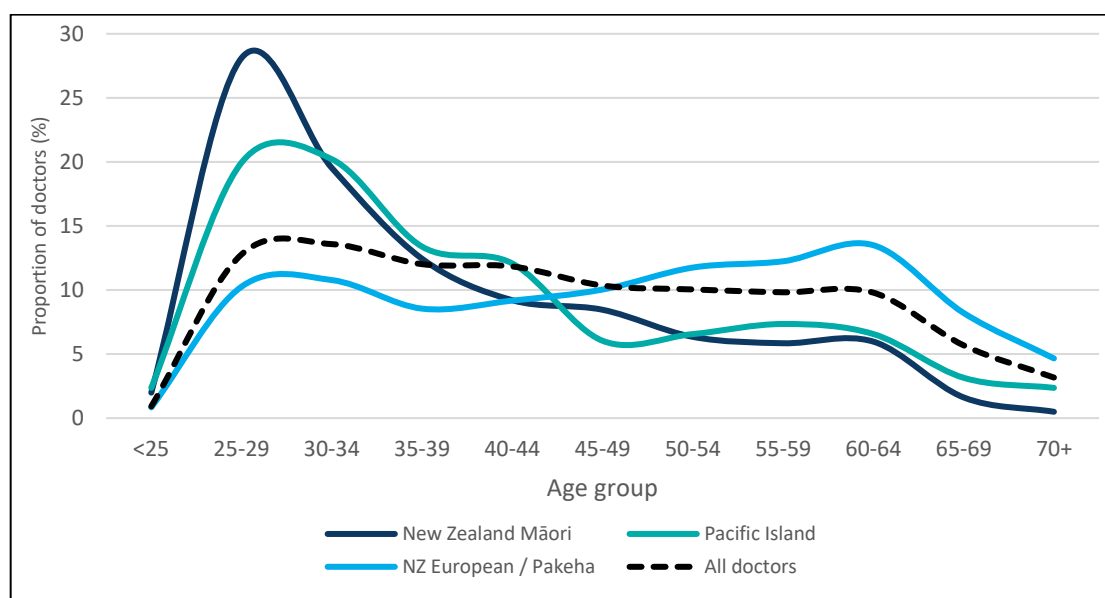
**Table 3: Average age of doctors by ethnicity and gender**

Ethnicity	Average age		
	Female	Male	Overall
Māori	37.3	39.7	38.4
Pacific Island (Pasifika)	39.0	42.4	40.8
Chinese	37.5	41.3	39.6
Indian	43.0	46.8	45.2
Other non-European	40.8	43.5	42.3
Other European	42.8	46.5	44.6
NZ European/Pākehā	45.2	51.5	48.5
<b>All doctors</b>	42.9	47.5	45.3

## Ethnicity by age group

Māori and Pasifika doctors are more likely to be aged under 35 years compared with NZ European/Pākehā doctors and the overall workforce. 49.6 percent of Māori doctors and 42.5 percent of Pasifika doctors are aged 34 and under, compared with 27.3 percent of the overall workforce.

**Figure 1: Ethnicity by age group (selected groups)**





Doctors identifying as New Zealand European/Pākehā and other European are more likely to be 45 or over – 60.4 and 46.0 percent respectively. They are relatively less likely to be aged under 35 – 21.9 and 23.8 percent.

This increased number of older doctors in these group may reflect IMGs<sup>4</sup> who come to New Zealand after already working as doctors for several years.

### Ethnicity by work role

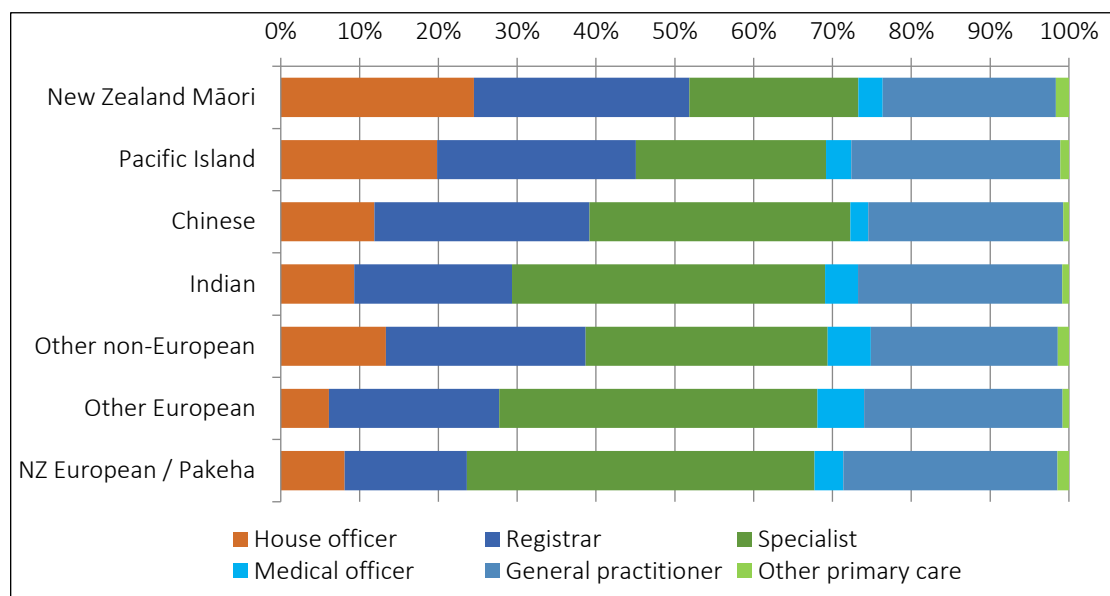
The proportion of Māori and Pasifika doctors reporting their work role as house officers and registrars is higher than that for NZ European/Pākehā (50.2 percent for Māori, 44.1 percent for Pasifika, and 23.0 percent for NZ European/Pākehā). This reflects their greater representation amongst more recently qualified doctors.

### Specialists

Conversely, the proportion of doctors reporting as specialists and medical officers (MOSS) is highest amongst NZ European/Pākehā doctors (46.4 percent), compared to only 23.8 percent for Māori and 26.8 percent for Pasifika.

The proportion of doctors reporting as general practitioners was a lot more consistent across ethnicities. NZ European/Pākehā doctors were most likely to be a GP with 26.4 percent reporting this. Māori doctors were least likely to work as a GP with only 21.3 percent reporting this work role.

**Figure 2: Proportion of ethnic groups by work role at main work site**



<sup>4</sup> IMG: international medical graduate (see page 34 for definition).

### Māori working in general practice

Māori doctors made up just 4 percent of doctors working as GPs (based on work role). Even allowing that some GPs may still be in training and reporting their work role as registrar, the level of representation of Māori doctors amongst GPs is considerably less than in the workforce.

The Royal New Zealand College of General Practitioners' most recent workforce survey confirmed these findings. They also found that GPs reporting an ethnicity of Māori or Pacific Island were at a much lower rate than is found in the general population<sup>5</sup>.

The College also found that “Māori are less likely to be in partnership or to be an owner of a practice than respondents reporting a European ethnicity (22 percent versus 36 percent) and more likely to be an employee or contractor (71 percent and 59 percent respectively)”.

### Proportional representation at the graduate level may not be enough

The information in this “Proportional representation at the graduate level may not be enough” section is the same as presented in the 2021 report. Updated information around the number of available general practice training places was not available at the time of publishing. We will update the figures in this section in the 2023 report.

A major ongoing obstacle to general practice and other specialties increasing the representation of Māori doctors amongst their numbers is that the pool of available Māori doctors graduating from medical schools is limited. The representation of Māori doctors amongst medical graduates is still slightly behind compared with the percentage of Māori in the New Zealand population. In addition, Māori and Pasifika populations experience greater health needs, creating a needs-based argument for greater than demographic representation of Māori and Pasifika doctors in the medical workforce.

There were about 210 fully funded general practice training (GPEP1) places in 2021. To achieve its goal of 22 percent Māori representation, the RNZCGP would need to increase the number of Māori registrars to about 46.

New Zealand registered 514 new graduates in 2020. Assuming about 15 percent of these were Māori, this is approximately 77 doctors. Therefore, the RNZCGP would need 60 percent of new Māori graduates to achieve their goal. This would leave the other specialties competing for the remaining graduates, all of which will have similar goals to increase their Māori representation.

New Zealand needs more Māori and Pasifika doctors at graduate level for all specialties to achieve demographic proportionality at specialist level. To achieve this in any meaningful timeframe will require Māori representation amongst medical students that is greater than Māori representation in the New Zealand population.

---

<sup>5</sup> 2020 General Practice Workforce Survey – Equity report – Royal New Zealand College of General Practitioners – December 2020 - [https://rnzcgp.org.nz/RNZCGP/Publications/The\\_GP\\_workforce/RNZCGP/Publications/GP%20workfor ce.aspx?hkey=a7341975-3f92-4d84-98ec-8c72f7c8e151](https://rnzcgp.org.nz/RNZCGP/Publications/The_GP_workforce/RNZCGP/Publications/GP%20workfor ce.aspx?hkey=a7341975-3f92-4d84-98ec-8c72f7c8e151)

## Gender

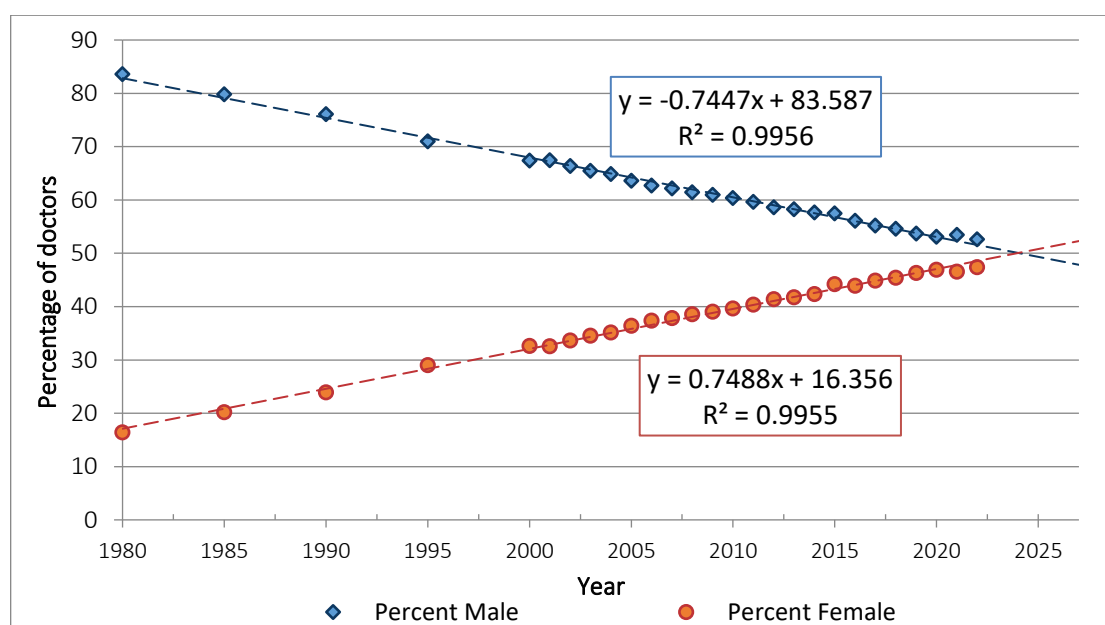
### Gender distribution of the workforce

The proportion of women in the workforce according to survey data increased in 2022 (from 46.6 percent in 2021 to 47.4 percent in 2022). Women will outnumber men in the workforce by 2025 based on current trends.

This figure is supported by registration data. 47.7 percent of doctors on the register with a current practising certificate were women (as of 30 June 2022).

Figure 3 compares the proportion of females in the active workforce going back to 1980. The proportion of females was just 32.6 percent in 2000 but is increasing steadily. A projection of the current trend suggests that women will outnumber men by 2025.

**Figure 3: Proportion of active doctors by gender (1980–2022) showing projected trend-forward to 2025.**



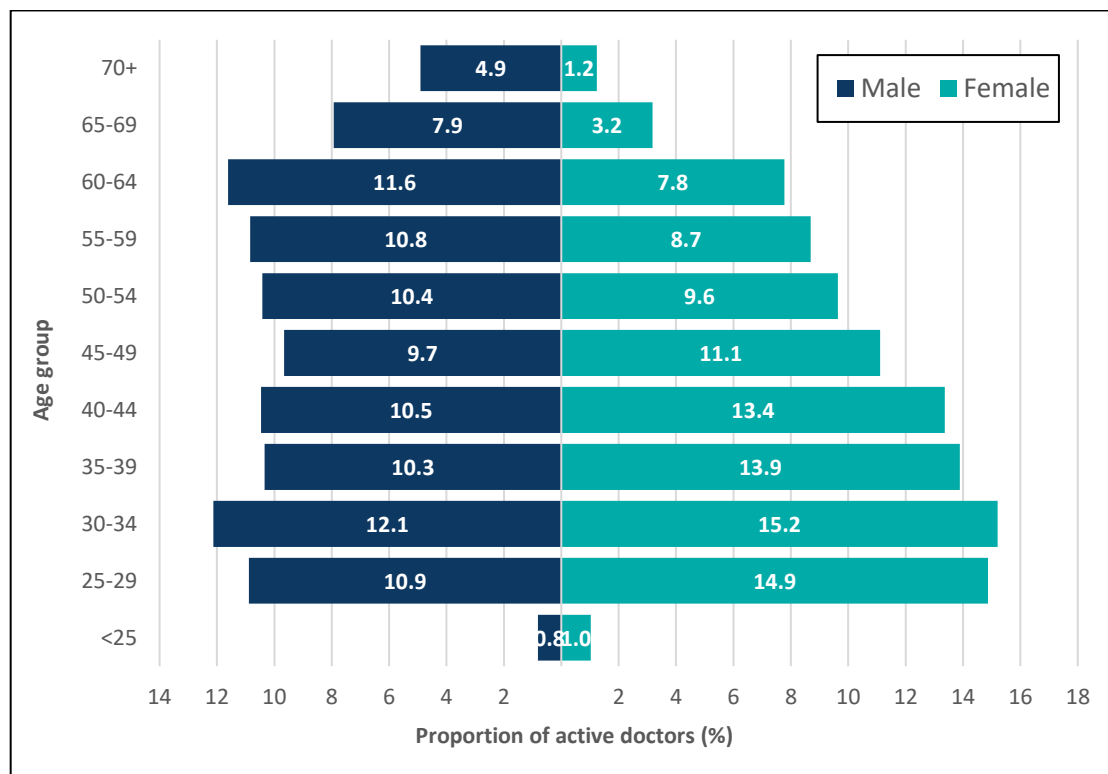
## Distribution by age and gender

There are more young female doctors than young male doctors. The largest groups of female doctors are those aged between 25 and 34. Male doctors are more evenly distributed. The largest groups of male doctors are those aged 30-34 and 60-64.

The distribution of female doctors reflects that they have outnumbered men amongst medical school graduates for some time, and we are now beginning to see the effect of this on the workforce. See Figure 6 on page 14.

Figure 4 shows the distribution of doctors by age and gender using a population pyramid.

**Figure 4: Distribution of active doctors by age and gender**



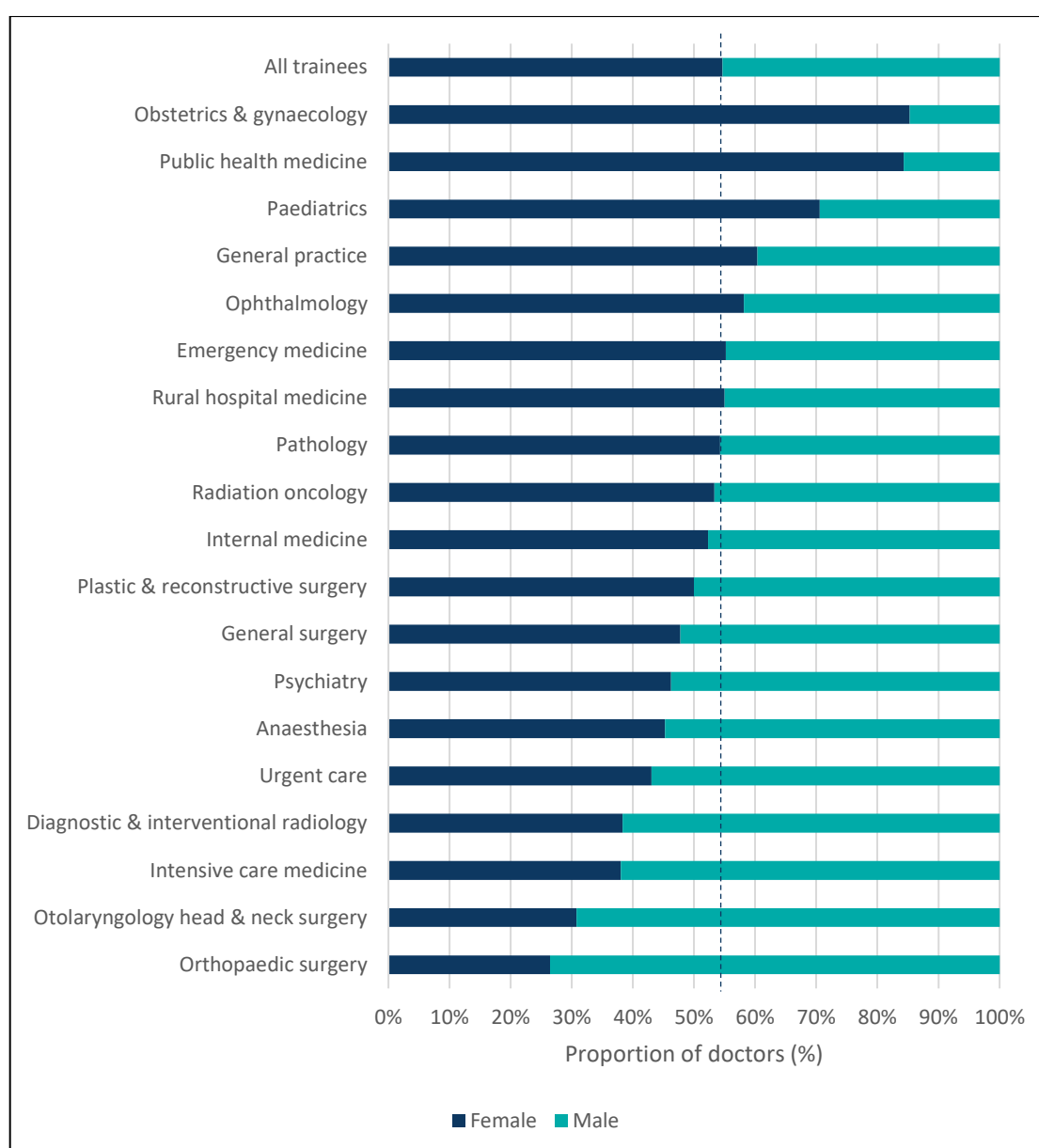
## Vocational trainees

Female doctors outnumber male doctors in vocational training – 54.7 percent of trainees are female. Female doctors are most highly represented in obstetrics & gynaecology (85.3 percent), public health medicine (84.3 percent), paediatrics (70.6 percent) and general practice (60.4 percent).

Male doctors are most highly represented in orthopaedic surgery (73.5 percent), otolaryngology head and neck surgery (69.2 percent), intensive care medicine (62.0 percent), and diagnostic and interventional radiology (61.7 percent).

Figure 5 shows the proportion of trainees in each vocational training area by gender as of 31 March 2022, focusing on those areas with more than 20 trainees.

**Figure 5: Vocational training area by gender (areas with more than 20 trainees)**



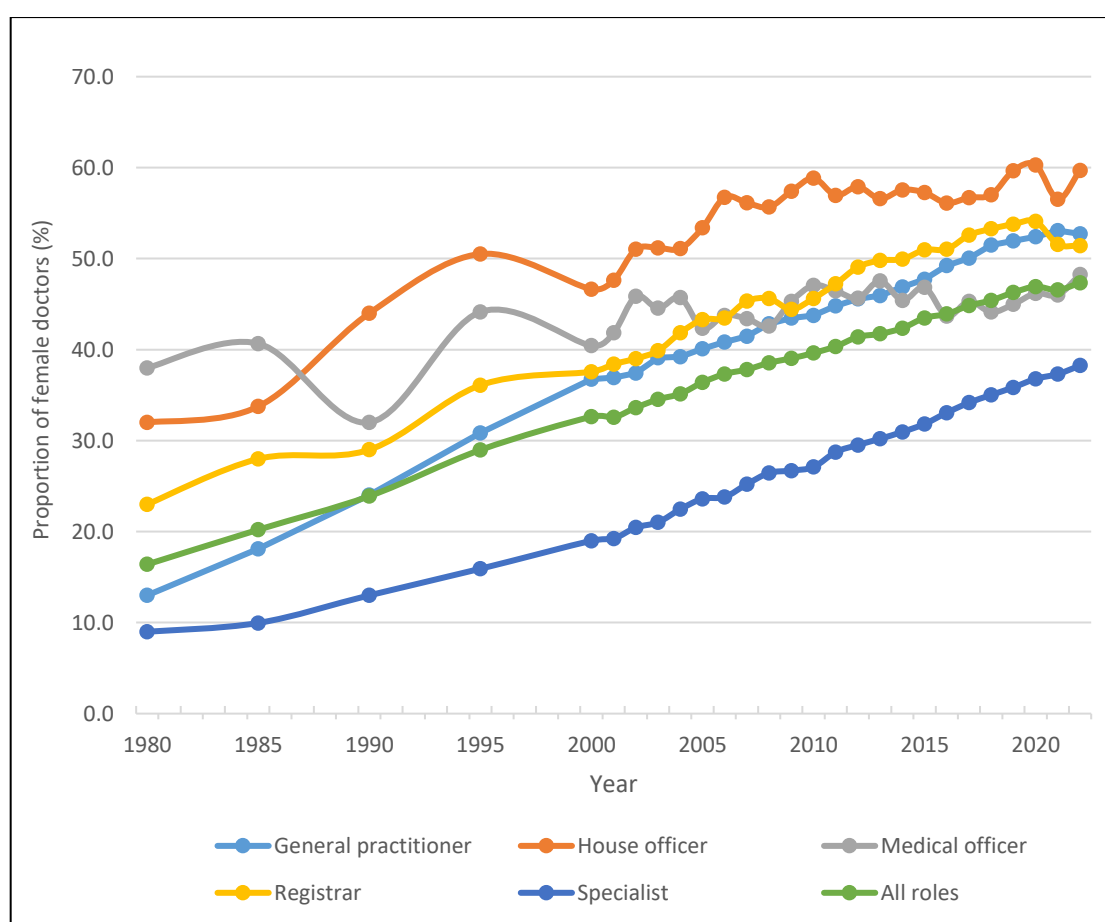
## Work role

Women outnumber men amongst house officers (59.7 percent), registrars (51.4 percent) and GPs (52.7 percent).

Women are least represented amongst specialists, making up 38.2 percent. However, this is up from 31.8 percent in 2015 and 27.1 percent in 2010. This gap should continue to decrease as the doctors who are currently house officers and registrars complete their vocational training.

Figure 6 shows the change in the proportion of females in the workforce by work role at their main work site between 1980 and 2022. Prior to 2000 we only have data at five-yearly intervals.

**Figure 6: Proportion of females by work role at main work site (1980-2022)**



## Work types

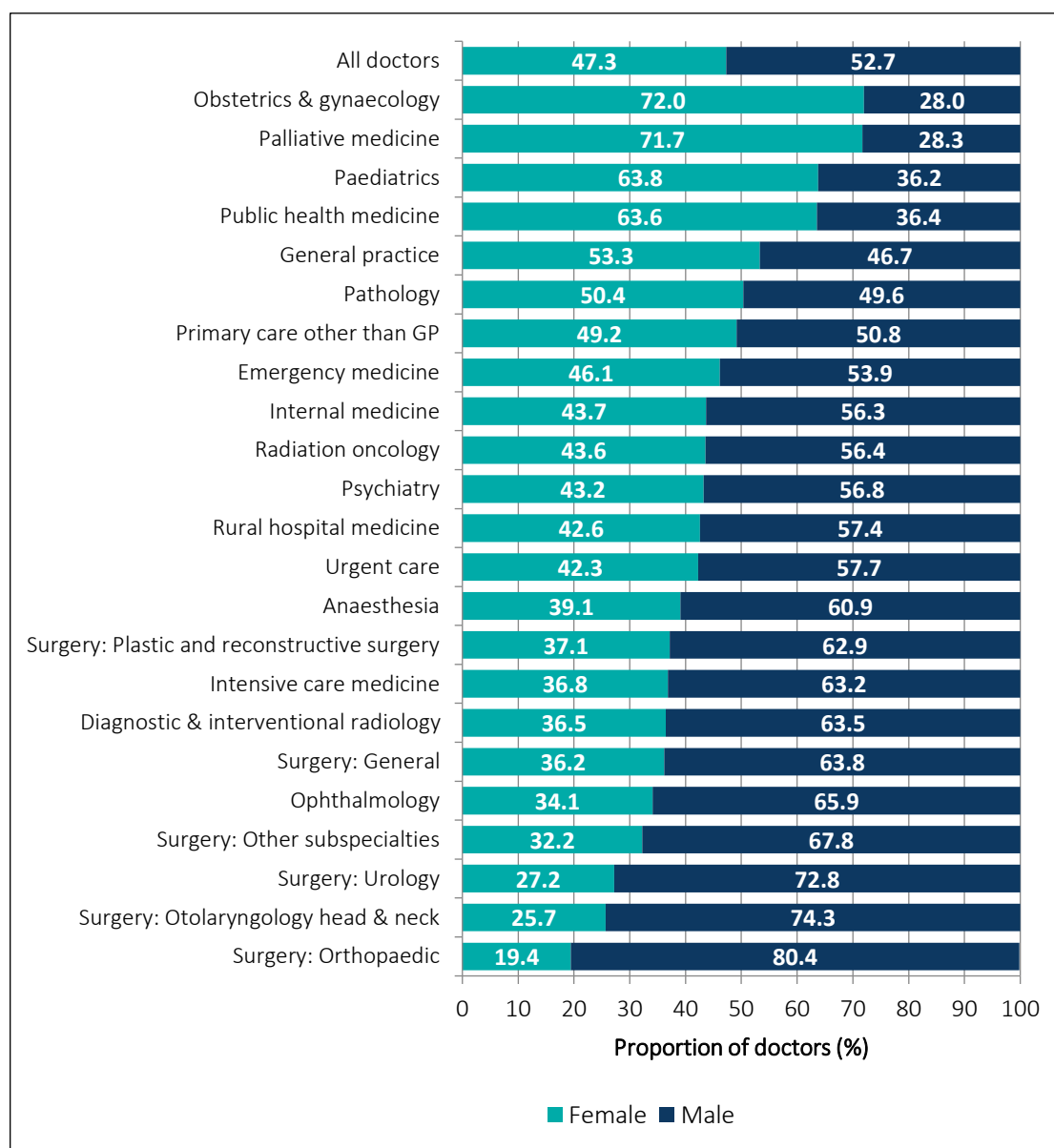
Women are most highly represented in the areas of obstetrics and gynaecology (72.0 percent), palliative medicine (71.7 percent) and paediatrics (63.8 percent).

Women are least represented in orthopaedic surgery (19.4 percent), otolaryngology head and neck surgery (25.7 percent), urology (27.2 percent) and ophthalmology (34.1 percent).

Taking all surgical work types together, women make up 28.2 percent of doctors. Female doctors have long been under-represented amongst surgical work types, but this is improving. In 2005, women made up 9.2 percent of doctors working in surgery. This increased slightly to 11.8 percent in 2010 and 18.0 percent in 2015.

Figure 7 shows the distribution by gender for work types with a total of 100 or more doctors.

**Figure 7: Proportion of doctors by work type and gender**



## Changes in the medical workforce

### Size of the workforce

The number of practising doctors increased by 11.1 percent between 2019 and 2022 — from 16,907 to 18,708. This compares to an increase of 12.1 percent in the previous three-year period (see Table 4).

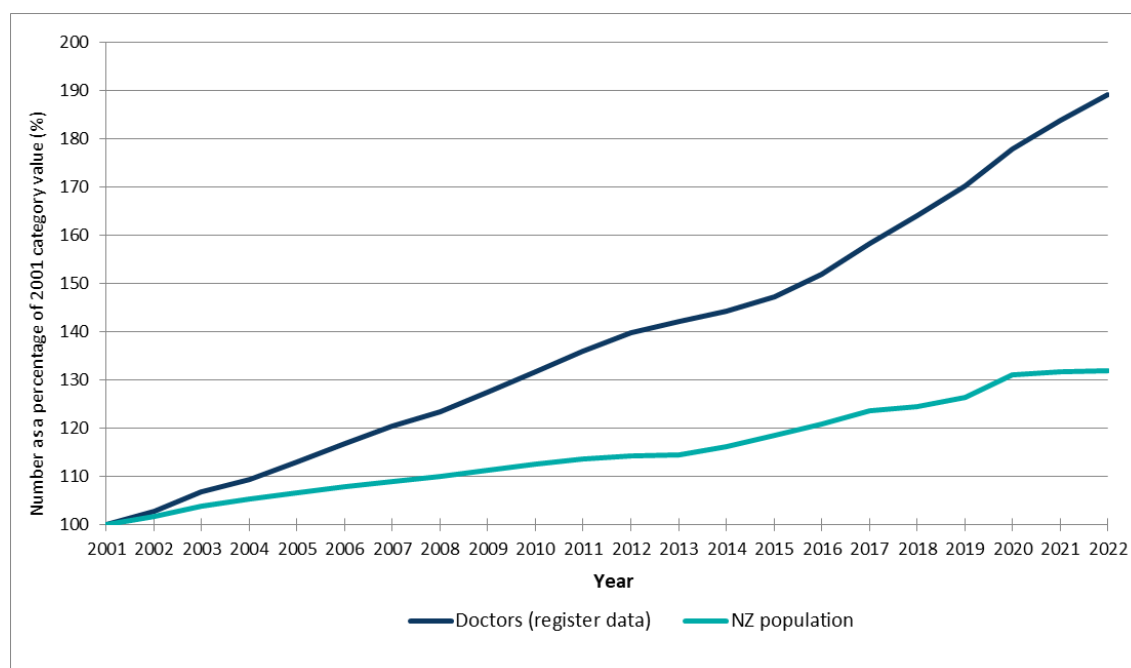
**Table 4: Estimated yearly workforce growth and changes in composition**

	2001	2004	2007	2010	2013	2016	2019	2022
<b>Total workforce (based on registration data)<sup>1</sup></b>	<b>9,119</b>	<b>10,857</b>	<b>11,946</b>	<b>13,080</b>	<b>14,111</b>	<b>15,077</b>	<b>16,907</b>	<b>18,780</b>
Percentage change in total workforce over the previous three years based on registration data (%)		19.1	10.0	9.5	7.9	6.8	12.1	11.1

<sup>1</sup> The total workforce according to registration data represents the number of doctors on the medical register with a current practising certificate as of 30 June of that year.

Figure 8 shows the size of the medical workforce as measured by registration data and of the New Zealand population compared to 2001 levels. The number of doctors continues to increase at a greater rate than the New Zealand population. This trend was not affected by COVID-related factors. By comparison, population growth has been notably slow in the last two years because of “a combination of natural increase (births minus deaths) and net migration (migrant arrivals minus migrant departures)”<sup>6</sup>.

**Figure 8: Change in size of the active medical workforce compared to change in the size of the New Zealand population (2001–2022)**



<sup>6</sup> Population growth lowest since 1986 – Statistics New Zealand – 16 August 2022 - <https://www.stats.govt.nz/news/population-growth-lowest-since-1986/>



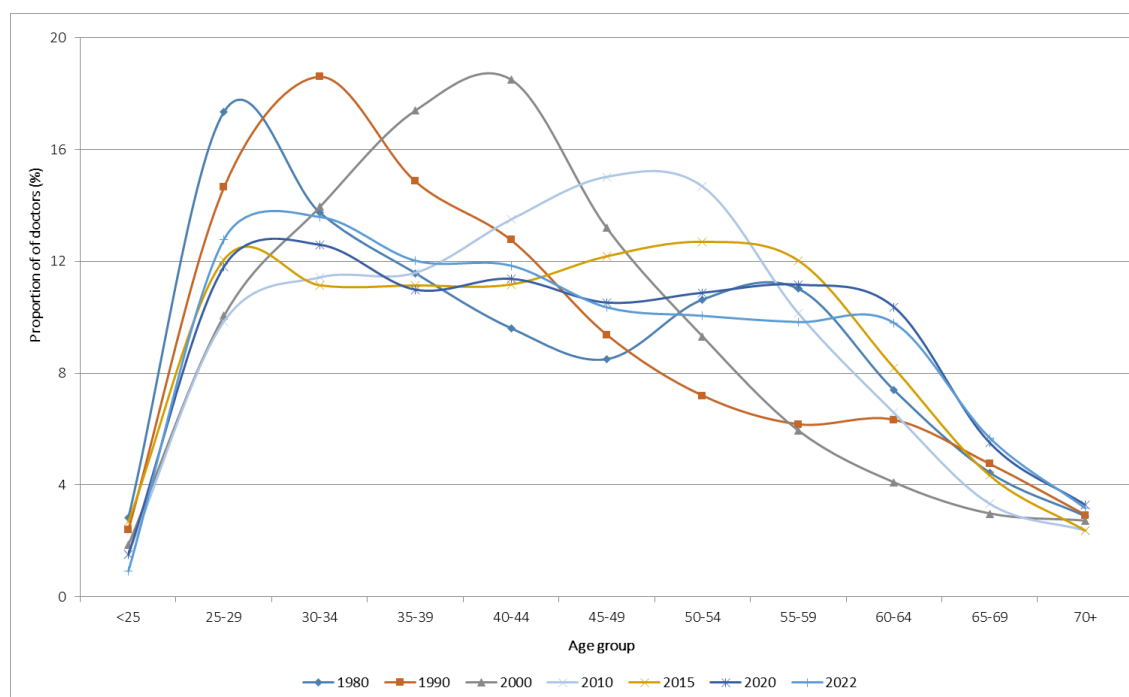
## Age distribution of the workforce

The average age of the workforce dropped very slightly to 45.3 years in 2022. The distribution of doctors continues to be more evenly spread across the age groups compared to previous years. The peaks previously seen in the 45-49 and 50-54 age groups in 2010 and 2015 have now flattened out.

Figure 9 compares the age distribution of the active workforce<sup>7</sup> based on survey data from 2000 to 2021. We have focused on selected series (2000, 2005, 2010, 2015, 2020, and 2022) to make it easier to see the changes over time.

In 2022, the largest group of doctors were those aged 30-34 (13.6 percent), followed closely by those aged 25-29 (12.8 percent). This reflects the increased numbers of graduates being produced by New Zealand's medical schools in recent years (see Table 21 on page 54).

**Figure 9: Age distribution of the active workforce (2000–2022)**



<sup>7</sup> Active doctors are those who responded to the workforce survey and reported working 4 or more hours per week.

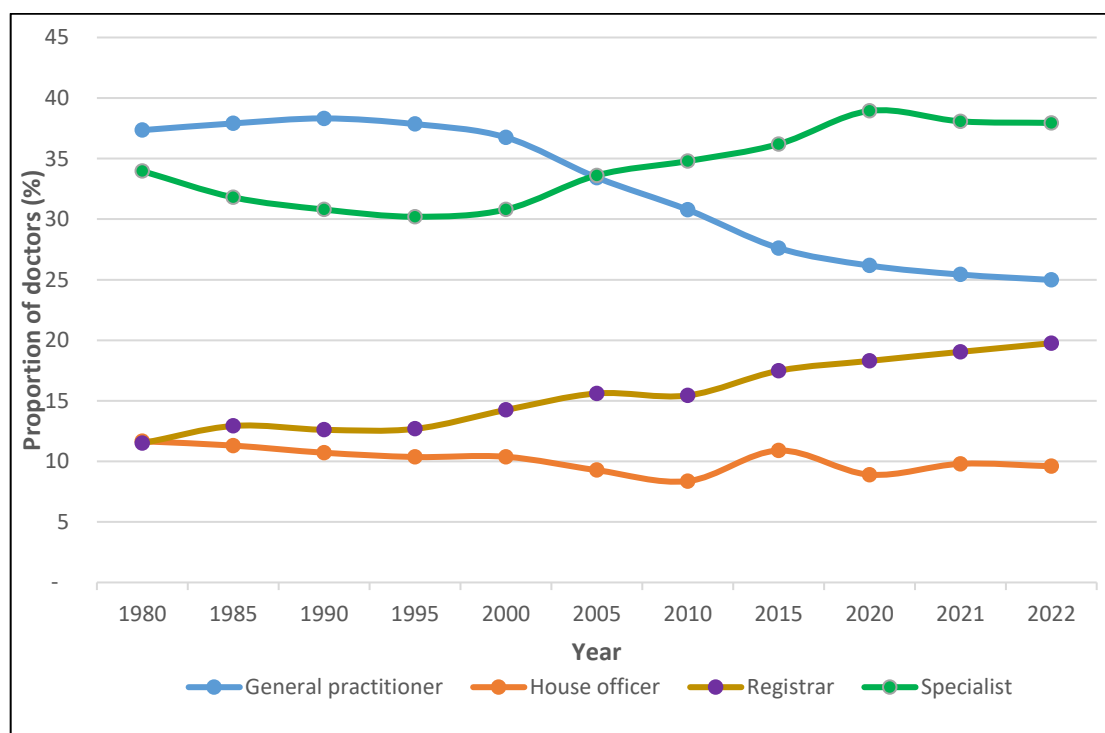
## Changes by work role

GPs make up a smaller proportion of the workforce than they once did. Almost 40 percent of doctors were GPs between 1980 and 2000. Since that time, their proportion has dropped to 25 percent.

The proportion of specialists increased during that same period. They are now the largest group within the workforce making up 38 percent of doctors. Registrars are the other group that is growing. The proportion of registrars has steadily increased from 11 percent in 1980 to 20 percent in 2022.

Figure 10 shows how the proportion of doctors by work role at their main work site has changed over time. It focuses on the four main work roles of specialist, GP, registrar, and house officer. Please note the break in the time scale - five-year intervals from 1980 through to 2020 and then one-year intervals from 2020 to 2022.

**Figure 10: Proportion of active doctors by work role (2000–2022)**



### Clarification of terminology used

The categories may not reflect current terminology in some cases but have been retained to allow for the comparison of data over time. The main example of this is house officers who are now more commonly known as interns or PGY1s (postgraduate year 1s).

### General practitioner and specialist

General practice is a specialist scope of practice for the purposes of registration. Doctors registered in a vocational scope of general practice are specialists. However, for the purposes of the survey, specialists and general practitioners (GP) are separate categories to help us to analyse and interpret the data. Because data are self-reported, not all doctors who report themselves as specialists or GPs will hold a vocational scope of practice.

## Work type

The vocational scopes of diagnostic radiology and rural hospital medicine increased the most between 30 June 2021 and 30 June 2022. Diagnostic radiology increased by 9.5 percent, with rural hospital medicine increasing by 8.3 percent.

General practice, the largest vocational scope with 3,850 doctors in 2022, increased by 0.4 percent. Internal medicine, the second largest with 1,333 doctors, increased by 2.6 percent.

The scopes of paediatric surgery, family planning, urology, dermatology, and ophthalmology decreased in 2022. However, these decreases were small compared with the scopes which increased.

There was no change in the scopes of medical administration, neurosurgery, occupational medicine, and rehabilitation medicine.

Table 5 shows the changes in the number of doctors registered in vocational scopes of practice. Only scopes with more than 100 doctors in 2022 are shown. The full list including all vocational scopes can be found in Table 18 on page 49.

**Table 5: Number of doctors by the vocational scope for selected years (2005–2022)**

Vocational scope	Year <sup>1</sup>						Percent change 2021–2022
	2005	2010	2015	2020	2021	2022	
General practice	2,446	2,701	3,303	3,748	3,835	3,850	0.4
Internal medicine	656	761	958	1,222	1,292	1,333	3.2
Anaesthesia	488	577	737	879	921	945	2.6
Diagnostic radiology	266	303	448	570	629	714	13.5
Psychiatry	425	489	559	671	665	689	3.6
Paediatrics	219	289	353	422	431	446	3.5
Emergency medicine	88	135	224	350	397	408	2.8
Obstetrics and gynaecology	223	234	280	337	345	352	2.0
Pathology	225	238	278	324	327	342	4.6
Orthopaedic surgery	211	237	273	311	316	322	1.9
General surgery	227	235	262	298	313	318	1.6
Urgent care	103	119	136	249	268	286	6.7
Public health medicine	130	157	177	180	182	186	2.2
Ophthalmology	107	124	134	166	166	165	-0.6
Rural hospital medicine	-	26	105	128	132	143	8.3
Otolaryngology head and neck surgery	85	97	108	119	124	129	4.0
Intensive care medicine	44	58	81	111	113	116	2.7
<b>Total</b>	<b>6,389</b>	<b>7,310</b>	<b>9,069</b>	<b>10,863</b>	<b>11,255</b>	<b>11,566</b>	<b>2.8</b>

<sup>1</sup> Figures represent the number of doctors with vocational scope registration and current practising certificates as of 30 June of the year. Figures may differ slightly from those published in the 2021 report. This can occur when changes to a doctor's registration are backdated after the report data has been extracted.

## Work type and age

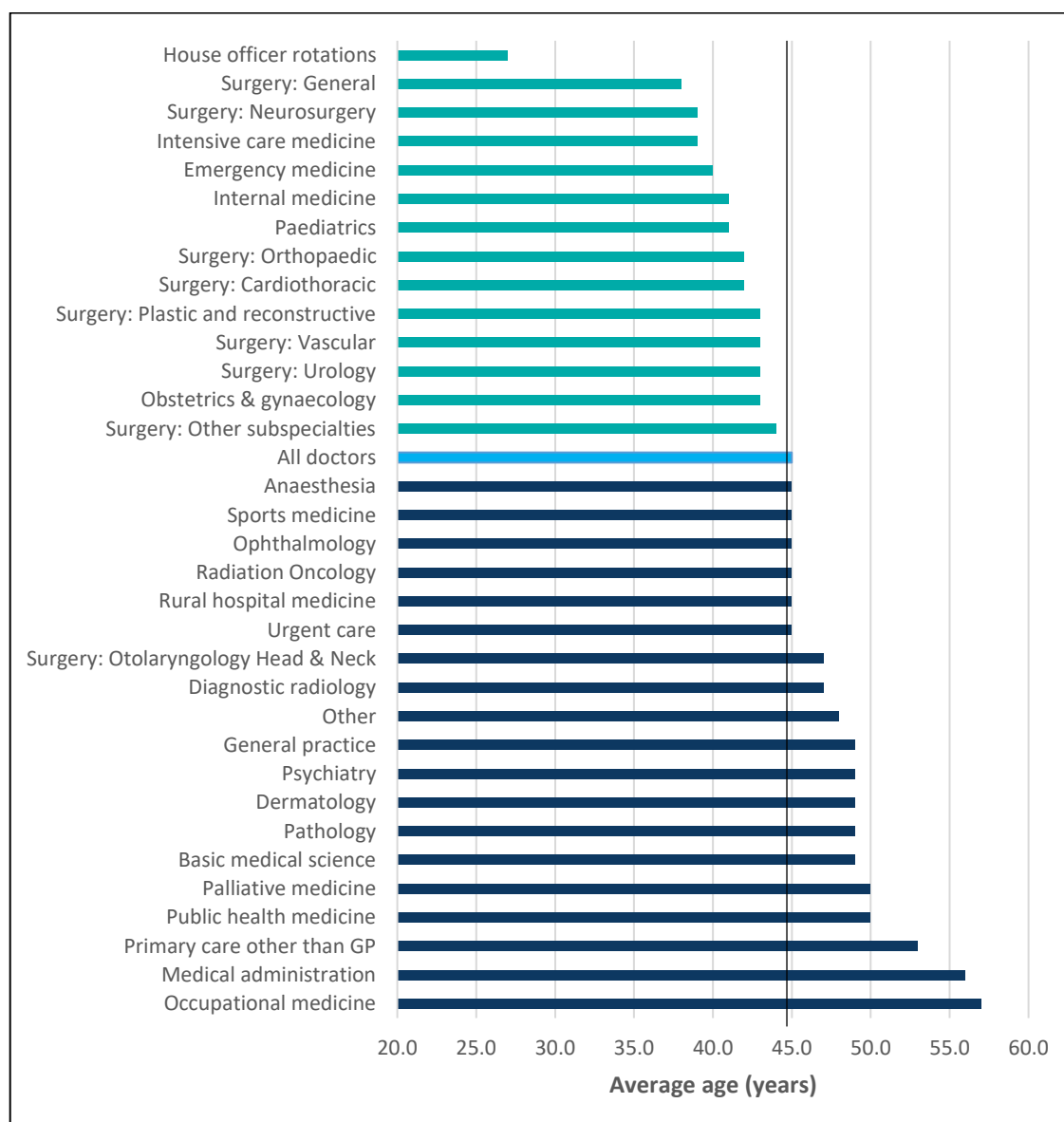
The average age is highest in occupational medicine (57 years), followed by medical administration (56 years) and primary care other than GP (53 years).

Aside from doctors working in house officer rotations, the average age is lowest in general surgery, neurosurgery, intensive care medicine, and emergency medicine. General surgery and neurosurgery are a surprise here. It is possible the average age of these groups is skewed by house officers reporting a specific area of medicine rather than house officer rotations. See page 21 for further analysis on this point.

Doctors working in house officer rotations are almost exclusively new graduates. As a result, they have the youngest average age (27 years).

Figure 11 compares the average age of different work types, focusing on those work types with more than 50 respondents.

**Figure 11: Average age by work type at main work site (areas with more than 50 doctors)**



### Age and vocational scopes

The average ages in Figure 11 include doctors at all levels and so do not give an accurate indication of the age of the specialist workforce in an area of medicine. We have therefore analysed the average age of doctors on the register by vocational scope of practice to provide more accurate figures.

Looking at vocational scopes with 100 or more doctors, psychiatry, public health medicine, and otolaryngology head and neck surgery have the highest average age – 54 years.

The youngest vocational scope is emergency medicine with an average age of 46 years. The next youngest are anesthesia and intensive care medicine, both with an average age of 49 years.

The average age of all doctors with a vocational scope is 52 years in 2022, up from 48 years in 2005 and 50 years in 2010.

Table 6 shows that the average age of doctors on the register practising in a vocational scope of practice between 2005 and 2022, focusing on scopes with 100 or more doctors. Table 19 on page 50 shows the same analysis but for all scopes.

**Table 6: Average age of doctors on the register with a vocational scope (2005–2022)**

Vocational scope	Year					
	2005	2010	2015	2020	2021	2022
Anaesthesia	46	48	49	49	49	49
Diagnostic radiology	48	49	49	49	49	49
Emergency medicine	41	43	45	46	46	46
General practice	49	51	53	53	53	53
General surgery	49	51	51	52	51	52
Intensive care medicine	46	48	49	49	49	50
Internal medicine	50	51	50	51	50	50
Obstetrics and gynaecology	49	51	52	52	52	51
Ophthalmology	49	50	51	51	52	52
Orthopaedic surgery	49	50	52	52	52	52
Otolaryngology head and neck surgery	49	51	53	54	54	54
Paediatrics	47	48	49	50	50	50
Pathology	49	50	51	51	51	52
Psychiatry	48	50	52	54	55	54
Public health medicine	47	49	51	52	53	54
Rural hospital medicine	-	47	49	51	51	50
Urgent care	45	48	51	52	52	51
<b>All doctors with vocational scope</b>	<b>48</b>	<b>50</b>	<b>51</b>	<b>52</b>	<b>52</b>	<b>52</b>

## Workloads

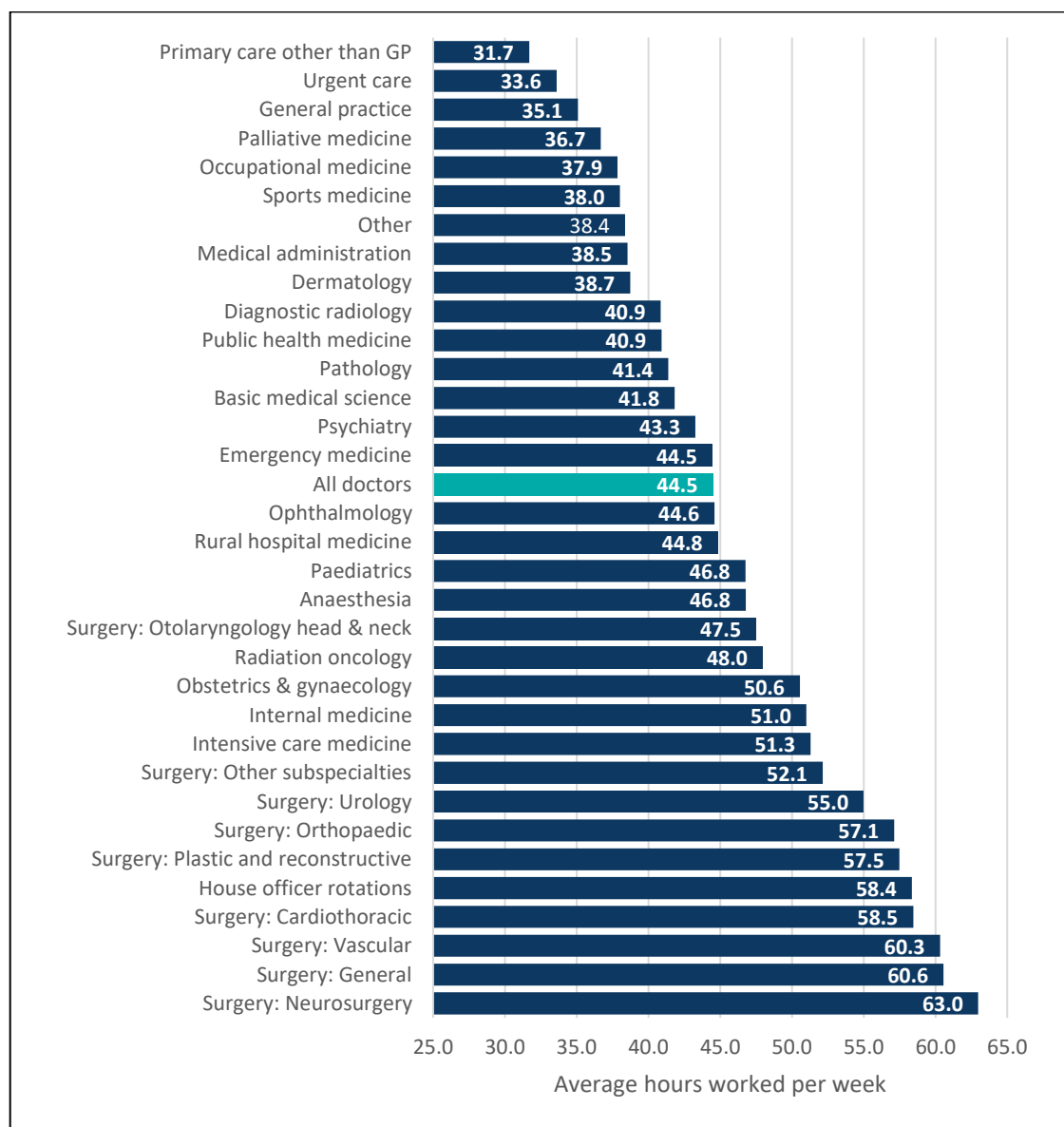
### Hours worked by work type

Doctors in neurosurgery work the most hours (63 hours per week) followed by general surgery (60.6 hours), and vascular surgery (60.3 hours).

Doctors in primary care other than GP, urgent care, and general practice work the fewest hours per week on average. This reflects the number of doctors working part-time in these specialties. 58.8 percent of doctors in general practice reported working less than 40 hours per week compared with only 7.8 percent of doctors working in surgery.

Figure 12 shows the average hours worked by work type, looking only at those work types with 50 or more respondents.

**Figure 12: Average hours worked by work type (areas with more than 50 respondents)**



## Hours worked by work role

The average number of hours doctors report working is decreasing – from 47.1 hours in 2000 to 44.5 hours in 2022. House officers and registrars report working the most hours, with GPs and specialists reporting the least hours.

Hours reported by house officers and registrars decreased between 2000 and 2010 but has increased in recent years. House officers are the only group reporting more hours worked than in 2000 (65.1 hours in 2022 compared with 52.1 hours in 2010).

Some house officers may be trying to report multiple rotations rather than their typical or most recent working week. However, even looking at just the main work site, house officers reported working 52.5 hours per week – more than the workforce average.

The multi-employer collective agreement (MECA)<sup>8</sup> between the New Zealand Resident Doctors' Association and the 20 District Health Boards sets out the terms and conditions of employment for resident medical officers (RMOs), which includes house officers. The terms of the MECA don't preclude the reported hours we're seeing. Under the MECA, RMOs can be rostered to work up to 16 hours in a single day, 72 hours in a 7-day period, or 140 hours in a 14 day period. It is therefore possible that house officers might on average work between 50 and 60 hours per week.

Average hours worked by specialists and GPs continue to decrease, with GPs down to 34.9 hours (from 42.2 in 2000) and specialists down to 42.7 hours (from 48.2 in 2000). This is another example of the increased tendency of GPs and specialists to work part-time compared with house officers and registrars. 59.3 percent of GPs and 25.1 percent of specialists work less than 40 hours per week compared to only 1.1 percent of house officers and 11.7 percent of registrars.

Table 7 shows the changes over time in the average number of hours worked each week, by work role, at the doctor's main work site.

**Table 7: Average hours worked by work role (2000–2022)**

Work role	Year					
	2000	2005	2010	2015	2021	2022
General practitioner	42.2	39.8	37.8	37.1	35.1	34.9
House officer	55.7	54.6	52.1	53.7	63.6	65.1
Registrar	55.0	53.1	51.6	51.4	52.3	52.4
Specialist	48.2	46.6	45.2	45.0	43.0	42.7
<b>All doctors</b>	<b>47.1</b>	<b>45.5</b>	<b>43.9</b>	<b>44.4</b>	<b>44.4</b>	<b>44.5</b>

<sup>8</sup> As defined in the Multi-Employer Collective Agreement (MECA) between the Resident Doctors Association (RDA) and the 20 District Health Boards (<https://nzrda.org.nz/rmos/meca-fags/>)

## Hours worked by age and gender

Overall, women reported working 42.9 hours per week compared with 45.9 hours for men.

Doctors aged in their 20s report working the most hours per week, with women reporting slightly more hours than men (61.4 hours for women versus 59.9 hours for men). After the age of 30, men work more hours per week than women. This difference peaks in the 50–54 age group where men report working 45.6 hours compared with 37.6 for women.

**Table 8: Average of total hours worked, by age and gender**

Gender	Age group											All ages, average hours
	≤24	25–29	30–34	35–39	40–44	45–49	50–54	55–59	60–64	65–69	70+	
Female	64.7	61.2	48.8	39.5	37.5	37.6	37.1	36.8	35.8	34.6	28.8	42.9
Male	60.2	59.9	51.1	45.5	44.6	45.6	45.3	44.6	42.8	37	29.9	45.9
<b>All doctors</b>	<b>62.6</b>	<b>60.6</b>	<b>49.9</b>	<b>42.2</b>	<b>40.8</b>	<b>41.6</b>	<b>41.6</b>	<b>41.4</b>	<b>40.2</b>	<b>36.3</b>	<b>29.7</b>	<b>44.5</b>

The average number of hours worked continues to decrease for men but increase for women. Women worked 42.9 hours per week in 2022 compared with 41.2 hours in 2015, and 40.6 hours in 2005. Men reported working 45.9 hours per week in 2022 compared with 46.6 hours in 2010 and 48.3 hours in 2005.

**Table 9: Average hours worked, by gender and year (2005–2022)**

Gender	Year					
	2005	2010	2015	2020	2021	2022
Female	40.6	39.8	41.2	42.0	42.6	42.9
Male	48.3	46.6	46.8	46.0	46.5	45.9
<b>All doctors</b>	<b>45.5</b>	<b>43.9</b>	<b>44.4</b>	<b>44.0</b>	<b>44.3</b>	<b>44.5</b>

## Gender and part-time work

Women are much more likely to work part-time than men. Almost 39 percent of women reported working fewer than 40 hours compared with just under 22 percent of men.

The most common reasons given by women for working part-time were personal preference. (1,493 respondents), part-time work (833 respondents) and family commitments (520 respondents).

The most common reasons given by men for working part-time were personal preference (1,196 respondents), that they were retired or semi-retired (261 respondents), and part-time work (244 respondents). Only 67 men reported family commitments as a reason for part-time work.



## Hours on call by work role

Most doctors did not report working “on-call” – over 72 percent of doctors reported no on-call hours. Specialists reported the most on-call hours. 48 percent of specialists were on-call, with 30.4 percent reporting 10 or more hours. House officers reported the least on-call hours – 96.9 percent indicating no on-call hours. Similarly, less than 14 percent of registrars reported on-call hours.

For house officers and registrars, the lower number of on-call hours reflects the higher number of hours they work on average. Where doctors are on-call and are required to work, we ask them to record these hours in their hours worked rather than their on-call hours.

Table 10 shows on-call hours by workforce role, grouped by on-call hours. “Hours on call” measures the additional hours when doctors were on call but were not required to work. If no on-call hours are reported, the doctor was either not on call or chose not to provide details of their on-call hours.

**Table 10: Doctors’ on-call hours, grouped in each work role (%)**

On-call hours, grouped	General practitioner	House officer	Registrar	Medical officer	Specialist
No on-call hours	79.4	96.9	86.6	76.2	52.0
1–4	6.0	0.5	1.3	3.1	6.3
5–9	4.3	1.1	3.3	3.3	11.4
10–19	3.6	1.0	5.2	9.6	17.1
20–49	4.2	0.5	3.1	7.0	11.1
50 and over	2.6	0.1	0.5	0.8	2.2
<b>Total<sup>1</sup></b>	<b>100.0</b>	<b>100.0</b>	<b>100.0</b>	<b>100.0</b>	<b>100.0</b>

<sup>1</sup> Individual category may not add up to the total due to rounding.

## Hours on call by employer

84 percent of specialists who reported being on-call for 10 or more hours per week work in public hospitals.

Amongst other work roles, most doctors on-call for 10 or more hours per week worked in public hospitals (41 percent) and group private practices (37.2 percent). Over 70 percent of all doctors on-call for 10 or more hours per week worked in public hospitals.

Table 11 shows the main place of work for doctors on call for 10 or more hours each week and compares specialists with all other work roles.

**Table 11: Proportion of doctors on call for 10 or more hours each week, by employer (%)**

Main employer	Specialist	Other work roles	Total
Commercial company	0.7	2.9	1.4
Government department/agency	2.9	2.9	2.9
Group private practice	3.8	37.2	14.6
Private hospital	3.0	1.1	2.4
Professional body	0.1	0.3	0.2
Public hospital	83.8	41.0	70.0
Solo private practice	2.1	5.7	3.3
University/polytechnic	0.7	0.7	0.7
Other	2.7	8.0	4.4
<b>Total<sup>1</sup></b>	<b>100.0</b>	<b>100.0</b>	<b>100.0</b>

<sup>1</sup> Individual categories may not add up to total due to rounding.

## Hours on call – changes over time

Hours on-call reported by doctors is decreasing. All work roles show fewer on-call hours in 2022 compared to 2000. Specialists reported the most on-call hours (8.3 hours) with house officers and registrars reporting the least (0.4 and 2.1 hours respectively). GPs reported an average of 4.5 on-call hours.

Table 12 shows the changes in the average on-call hours by work role between 2000 and 2022.

**Table 12: Average on-call hours by work role (2000–2022)**

Work role	Year					
	2005	2010	2015	2020	2021	2022
General practitioner	5.6	5.3	4.8	4.5	4.3	4.5
House officer	1.3	0.8	0.5	0.4	0.3	0.4
Medical officer	5.6	4.6	6.7	5.0	4.5	4.5
Registrar	3.2	2.8	2.4	2.1	2.2	2.1
Specialist	13.1	11.0	10.2	9.0	8.4	8.3
<b>All doctors</b>	<b>7.3</b>	<b>6.3</b>	<b>5.9</b>	<b>5.5</b>	<b>4.5</b>	<b>5.0</b>

## Geographic distribution

### Limitations of geographic data

We recommend caution in interpreting and relying on figures in this section. Several limitations restrict how accurately we can report on where doctors work. This includes differing levels of precision in the workplace data we hold for doctors as well as challenges around representing the location of doctors who routinely work across multiple regions.

Doctors often work in more than one location. However, we need to allocate each doctor to a single region for reporting purposes. This means some locations where a doctor works will not be reflected in the results.

Because of this, the results tend to favour larger regions in areas where doctors tend to work across multiple regions — for example, in the wider Auckland and Wellington regions. Doctors might work across the entire region throughout the year but will only be represented against one in these figures. This tends to be the largest or central region — Auckland within the wider Auckland region and Capital & Coast in the wider Wellington region.

### District Health Boards and Te Whatu Ora - Health New Zealand transition

District Health Boards (DHBs) were disestablished on 1 July 2022 and replaced by a new nationwide organisation - Te Whatu Ora - Health New Zealand. The geographic areas previously represented by DHBs still exist as regions within Te Whatu Ora. For example, what was Canterbury District Health Board is now a region called Te Whatu Ora – Health New Zealand Waitaha Canterbury.

The figures in this section are broken down by region using the boundaries from the now disestablished DHBs. The new regions are:

- Te Tai Tokerau (formerly Northland DHB)
- Waitematā (formerly Waitematā DHB)
- Te Toka Tumai Auckland (formerly Auckland DHB)
- Counties Manukau (formerly Counties Manukau DHB)
- Waikato (formerly Waikato DHB)
- Lakes (formerly Lakes DHB)
- Hauora a Toi Bay of Plenty (formerly Bay of Plenty DHB)
- Tairāwhiti (formerly Hauora Tairāwhiti)
- Taranaki (formerly Taranaki DHB)
- Te Matau a Māui Hawke’s Bay (formerly Hawke’s Bay DHB)
- Whanganui (formerly Whanganui DHB)
- Te Pae Hauora o Ruahine o Tararua MidCentral (formerly MidCentral DHB)
- Wairarapa (formerly Wairarapa DHB)
- Hutt Valley (formerly Hutt Valley DHB)
- Capital and Coast (formerly Capital and Coast DHB)
- Nelson Marlborough (formerly Nelson Marlborough DHB)
- Te Tai o Poutini West Coast (formerly West Coast DHB)
- Waitaha Canterbury (formerly Canterbury DHB)
- South Canterbury (formerly South Canterbury DHB)
- Southern (formerly Southern DHB)

## Distribution of doctors by region

The regions with the most doctors are Te Toka Tumai Auckland, Waitaha Canterbury, and Capital and Coast.

The figures for Te Toka Tumai Auckland and Capital & Coast will be exaggerated as we allocate each doctor to a single region for reporting purposes. It is likely the doctors in the wider Auckland and Wellington regions are more evenly spread.

Viewed together, the wider Auckland region contain 34.7 percent of doctors. This is consistent with their proportion of the population (33.9 percent). Similarly, the wider Wellington region makes up 12.5 percent of doctors and 10.5 percent of the population.

Over three-quarters of doctors are based in the North Island (76.4 percent). Waitaha Canterbury is by far the largest region in the South Island; over half of all doctors in the South Island and 12.3 percent of all doctors nationwide work in Waitaha Canterbury.

Table 13 shows the number of doctors and GPs in each region, along with the proportion of FTEs, proportion of GPs, and average hours worked.

**Table 13: Distribution of doctors and GPs by region**

Region	Population <sup>9</sup>	Number of doctors	Number of GPs	Proportion of total FTEs (%)	Proportion of GPs (%)	Average hours worked
Te Tai Tokerau	197,900	574	162	3.3	3.7	44.5
Waitematā	639,400	1,313	461	6.8	10.6	40.3
Te Toka Tumai Auckland	499,100	3,520	543	21.9	12.5	48.2
Counties Manukau	601,300	1,199	367	6.7	8.4	43.4
Waikato	445,200	1,532	372	9.2	8.5	46.6
Lakes	118,400	315	70	1.8	1.6	44.8
Hauora a Toi Bay of Plenty	269,800	840	250	4.6	5.7	42.2
Tairāwhiti	51,500	157	43	0.9	1.0	42.4
Taranaki	126,600	374	95	2.2	2.2	44.6
Te Matau a Māui Hawke's Bay	181,400	565	167	3.2	3.8	43.2
Whanganui	69,100	168	37	1.0	0.8	45.9
Te Pae Hauora o Ruahine o Tararua MidCentral	189,100	538	121	3.2	2.8	46.8
Wairarapa	49,900	80	37	0.4	0.8	40.7
Hutt Valley	160,300	360	113	1.9	2.6	40.6
Capital and Coast	326,800	1,729	391	9.9	9.0	44.3
Nelson Marlborough	164,100	504	184	2.6	4.2	40.1
Te Tai o Poutini West Coast	32,700	61	16	0.3	0.4	38.0
Waitaha Canterbury	586,400	2,133	542	12.0	12.4	43.5
South Canterbury	62,200	147	46	0.9	1.1	46.4
Southern	351,400	1,263	341	7.2	7.8	44.1
<b>All regions</b>	<b>5,122,600</b>	<b>17,372</b>	<b>4,358</b>	<b>100</b>	<b>100</b>	<b>44.5</b>

<sup>9</sup> Based on Statistics New Zealand's June 2021 subnational population estimates. Unfortunately, the equivalent figure for 2022 was not available at the time of publishing.

### Distribution of GPs

The two largest regions in terms of numbers of GPs are Te Toka Tumai Auckland (3,520) and Waitaha Canterbury (2,133).

Te Toka Tumai Auckland is relatively over-represented compared to the proportion of the population (12.5 percent of GPs compared to 9.7 percent of the New Zealand population). However, the wider Auckland region (including Waitemata and Counties Manukau) is relatively underrepresented, with 33.9 percent of the population but only 31.5 percent of GPs. Waitemata is underrepresented by 1.9 percentage points and Counties Manukau by 3.3 percentage points.

Capital and Coast (+2.6 percentage points) also has a proportion of GPs greater than its proportion of the population. Most other areas have GP numbers that are consistent with their proportion of the population (+/- 1 percentage point).

### Hours worked

Doctors reported working the most hours in Te Toka Tumai Auckland (48.2 hours) followed by Whanganui (46.8 hours) and Waikato (46.6 hours).

Doctors reported working the least hours in Te Tai o Poutini West Coast (38.0 hours), Nelson-Marlborough (40.1 hours), and Wairarapa (40.7 hours).

The higher reported hours worked in Te Toka Tumai Auckland will in part be due to the larger numbers of house officers who work in this region. With house officer hours excluded, the average hours reported per week is just over 44 hours per week.

### Hours worked by GPs

GPs outside of the major centres tended to report working more hours. GPs in Wairarapa reported working an average of 40.1 hours per week, followed by South Canterbury (39.5 hours) and Te Tai o Poutini West Coast (38.6 hours).

GPs in the Hauora a Toi Bay of Plenty region reported working the fewest hours (32.8 hours). Nelson Marlborough was the next lowest (33.2 hours), followed by Te Toka Tumai Auckland (33.9 hours).

## Gender

Women are more highly represented in larger centres. Capital and Coast has the highest proportion of female doctors (51.6 percent) and is one of only two regions with more female doctors than male doctors. The other region with more female than male doctors is Te Tai Tokerau (50.7 percent).

Whanganui has the lowest proportion of female doctors (38.7 percent) followed by Wairarapa (40.0 percent), and Waikato (42.9 percent).

The proportion of female doctors in the overall workforce is 47.4 percent.

## International medical graduates

IMGs are more highly represented outside of the larger centres. Whanganui has the highest percentage of IMGs (66.1 percent), followed by West Coast (65.6 percent), and Wairarapa (65.0 percent).

The regions with the lowest percentages of IMGs are Auckland (30.9 percent), Capital & Coast (33.5 percent) and Canterbury (36.1 percent).

A major factor in the lower percentage of IMGs in main urban areas is that New Zealand graduates in their first two years of practice must work in training centres and cannot work in rural areas. This will also be true in subsequent years, albeit to a lesser degree, when doctors are completing vocational training.

In addition, the figures may reflect that main urban areas are easier to staff and so rely less on recruiting doctors from overseas.

## Age

Doctors tend to be older on average outside of the main centres. However, this trend is not as pronounced as it is with gender and country of qualification.

Doctors are the oldest in Wairarapa (53 years), Waitematā (49 years), West Coast (48 years), and Hutt (48 years). The overall average age of 45 years.

Doctors are the youngest in Capital and Coast (43 years). Most other areas are about the same as the overall average (+/- one year).

Table 14 shows the percentage of female doctors, percentage of IMGs and average age for each region.

**Table 14: Proportion of percentage female, percentage IMG and average age**

Region	Population	Percentage female (%)	Percentage IMGs (%)	Average age
Te Tai Tokerau	197,900	50.7	52.6	45
Waitematā	639,400	47.9	42.3	49
Te Toka Tumai Auckland	499,100	48.6	30.9	44
Counties Manukau	601,300	46.8	41.7	47
Waikato	445,200	42.9	52.0	44
Lakes	118,400	47.9	47.9	44
Hauora a Toi Bay of Plenty	269,800	45.1	45.7	44
Tairāwhiti	51,500	44.6	52.9	46
Taranaki	126,600	45.7	47.1	44
Te Matau a Māui Hawke's Bay	181,400	48.1	47.8	44
Whanganui	69,100	38.7	66.1	46
Te Pae Hauora o Ruahine o Tararua MidCentral	189,100	41.6	47.0	44
Wairarapa	49,900	40.0	65.0	53
Hutt Valley	160,300	44.4	44.4	48
Capital and Coast	326,800	51.6	33.5	43
Nelson Marlborough	164,100	49.8	43.3	46
Te Tai o Poutini West Coast	32,700	47.5	65.6	48
Waitaha Canterbury	586,400	48.5	36.1	45
South Canterbury	62,200	43.5	56.5	47
Southern	351,400	46.6	44.2	46
<b>All regions</b>	<b>5,122,600</b>	<b>47.4</b>	<b>41.0</b>	<b>45</b>

### Wider Auckland region

The three Auckland-based regions represent over a third of New Zealand's population (34.0 percent) and make up 34.6 percent of all doctors and 31.5 percent of all GPs.

Doctors in the Auckland regions work slightly more hours (45.5 hours versus 44.5 hours per week) but are on call for less hours on average compared to the overall workforce. GPs in the Auckland regions work about the same number of hours per week as the overall GP workforce (33.5 versus 33.2 hours per week).

The proportion of female doctors in Auckland is slightly compared to the overall workforce, while the proportion of IMGs is significantly lower (35.5 percent versus 41.2 percent).

**Table 15: Summary of workforce statistics – Auckland region**

Workforce measure	Auckland	New Zealand
Proportion of doctors (%) <sup>1</sup>	34.6	-
Proportion of GPs (%) <sup>2</sup>	31.5	-
Population <sup>3</sup>	1,739,800	5,122,600
Proportion of population (%)	34	-
Average hours worked	45.5	44.5
Average hours worked by GPs	33.5	33.2
Average on call hours	4.0	5.0
Average age	45.8	45.3
Proportion of female doctors (%)	48.1	47.4
Proportion of IMGs (%)	35.5	41.2

<sup>1</sup> Represents all active doctors who responded to the survey.

<sup>2</sup> Represents active doctors who reported working in general practice at one or more of their work sites.

<sup>3</sup> Based on Statistics New Zealand's June 2021 subnational population estimates. Unfortunately, the equivalent figure for 2022 was not available at the time of publishing.



## International medical graduates

International medical graduates (IMGs) make up 41.2 percent of doctors who responded to the survey and 42.2 percent of doctors on the register. Historically the proportion of IMGs has tended to increase each year. Over the last five years, however, this growth has stopped, and the proportion is now either about the same or slightly less as the previous year.

### IMGs play an important role in the medical workforce

IMGs are important to the medical workforce. IMGs fill gaps that we cannot fill with locally trained doctors. Some IMGs come here to gain experience and expertise they cannot get in their home country. Other IMGs emigrate to New Zealand permanently, bringing with them the benefit of their experience and expertise.

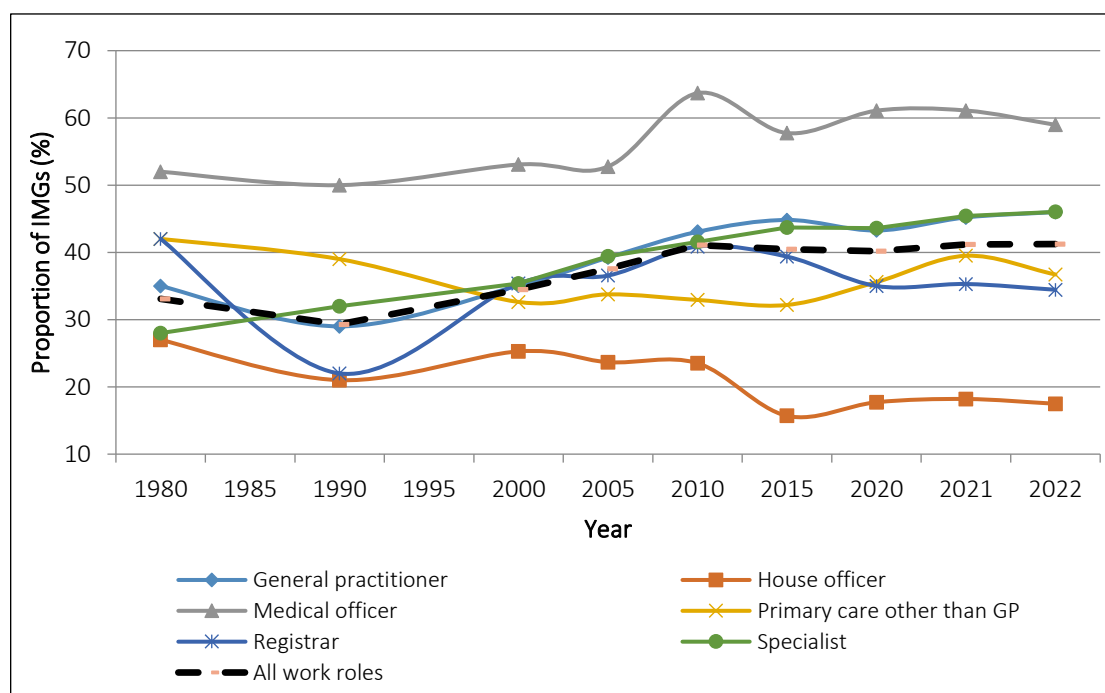
Movement of doctors between countries is normal and is not a one-way flow. Just as IMGs come to New Zealand to work, many New Zealand-trained doctors work in other countries – see the retention section on page 44 for more on this.

### Work role

IMGs are most represented amongst medical officers – 59 percent. They are least represented amongst house officers (17.5 percent) and registrars (34.4 percent). This reflects that there are fewer training posts available for IMGs because we are training increasing numbers of local graduates.

Figure 13 shows changes in the proportion of IMGs by work role at their main work site between 1980 and 2021. Note the break in time series – the graph is five-yearly from 1980 to 2020 and then one-yearly.

**Figure 13: Proportion of IMGs by work role at the main worksite (1980–2022)**



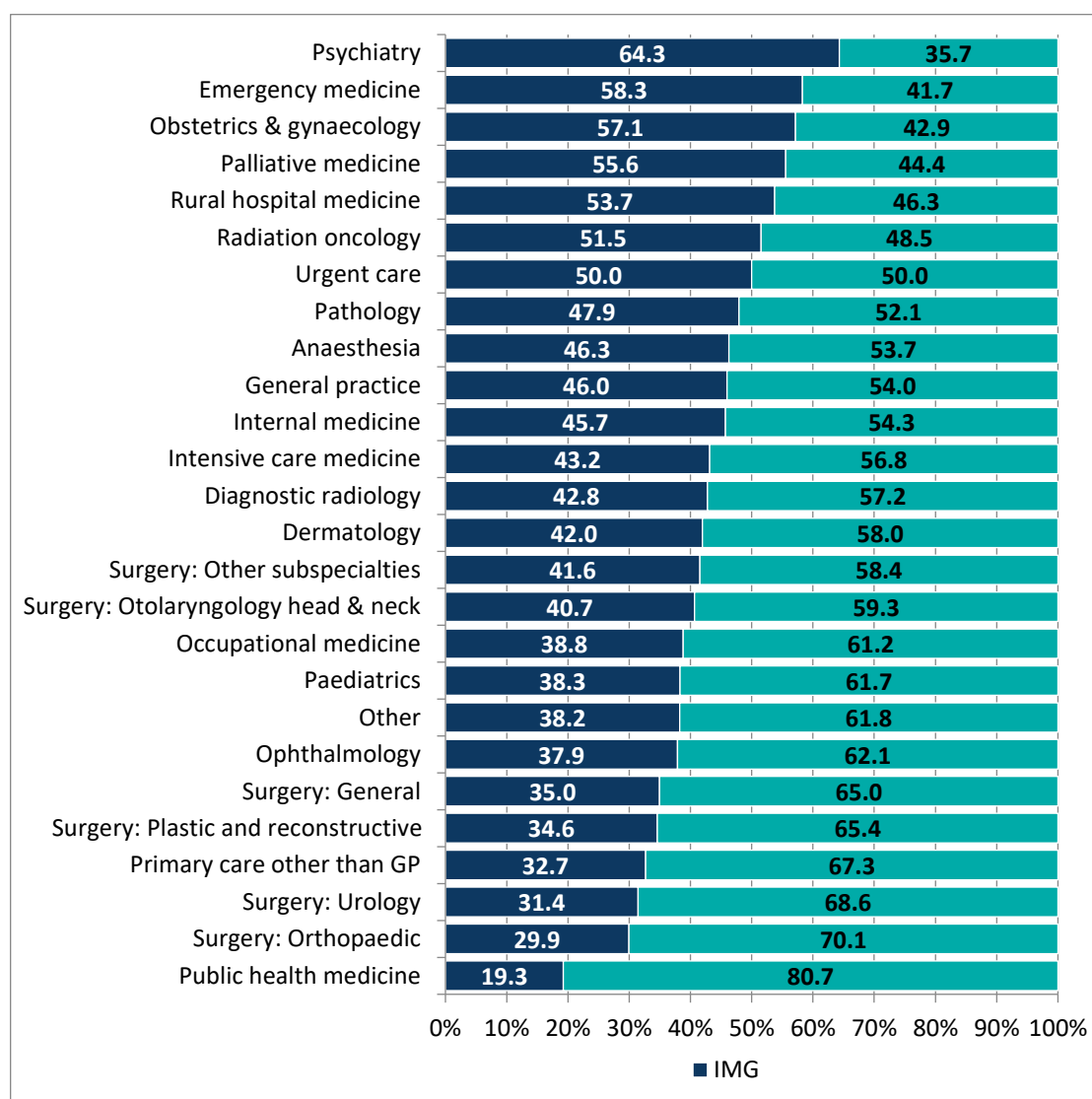
## Work type

IMGs are most represented in psychiatry (64.3 percent), emergency medicine (58.3 percent), and obstetrics and gynaecology (57.1 percent).

IMGs are least represented in public health medicine (19.3 percent), orthopaedic surgery (29.9 percent) and urology (31.4 percent).

Figure 14 shows the proportion of IMGs working as specialists or general practitioners in vocational scopes for those areas with more than 50 doctors.

**Figure 14: Proportion of IMGs by work type (areas with more than 50 doctors)**



## Retention — how long do our doctors stay

The information in this “Retention - how long do our doctors stay” section is the same as presented in the 2021 report. Updated retention information was not available at the time of publishing. We will update the figures in this section in the 2023 report.

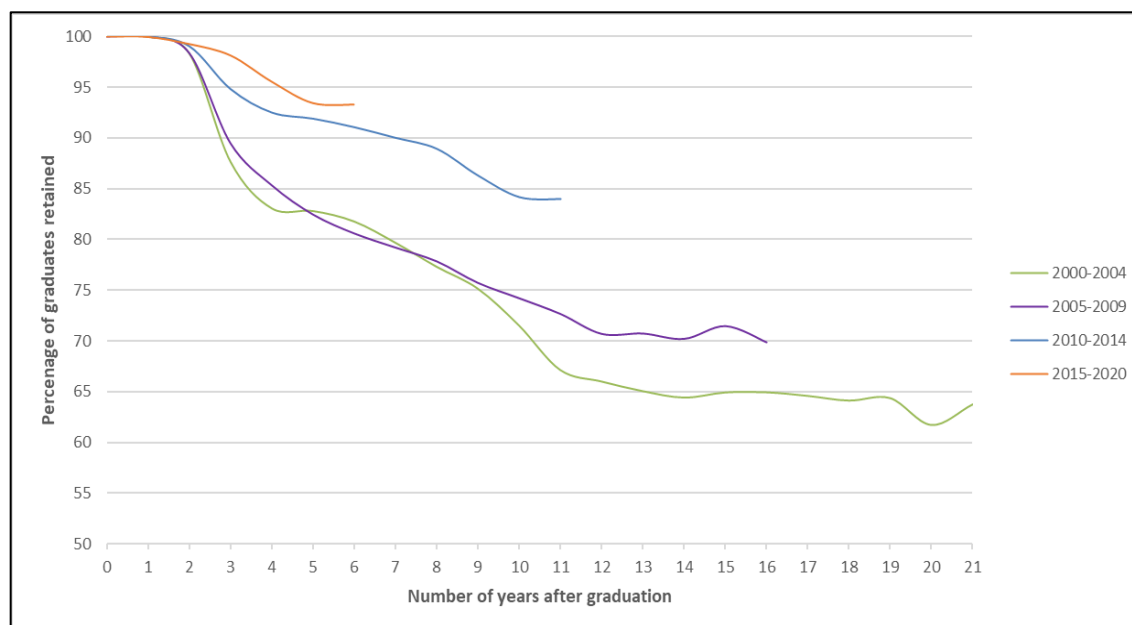
### Retention of New Zealand graduates

New Zealand is retaining more of our own graduates than we used to. We retained no less than 90 percent of graduates from the 2010, 2011, 2012 and 2013 cohorts for 5 years after initial registration. Retention for earlier cohorts at the same point averaged just under 80 percent.

This may reflect initiatives like the Ministry of Health’s Voluntary Bonding Scheme<sup>10</sup> giving graduates greater incentives to remain in New Zealand in the years immediately after graduation.

Figure 15 compares the retention rates at each year after graduation for successive classes of graduates from 2000 to 2020, combining these into 5-year cohorts to make it easier to see trends. See Table 21 on page 54 for more detailed retention data for New Zealand graduates.

**Figure 15: Graduate retention of class years 2000–2020 (5-year cohorts)**



<sup>10</sup> <https://www.health.govt.nz/our-work/health-workforce/voluntary-bonding-scheme>.

## Most graduates who leave go to Australia

Most New Zealand-trained doctors practising outside of New Zealand are in Australia (2,187 in 2019). This is not surprising given that Australia is our nearest (and largest) neighbour, with a similar health system which recognises New Zealand's medical qualifications.

Other countries where New Zealand-trained doctors are practising include the United Kingdom (187 in 2020), Ireland (22 in 2020), Canada (104 in 2019), and Israel (4 in 2020)<sup>11</sup>.

The OECD data on how many doctors move each year is relatively incomplete. The available data show that 19 doctors moved to Canada in 2019, 39 to the United Kingdom in 2020, and 2 moved to Ireland in 2020<sup>12</sup>.

---

<sup>11</sup> OECD, Health Workforce Migration – Foreign-trained doctors by country of origin – stock (<https://stats.oecd.org/>).

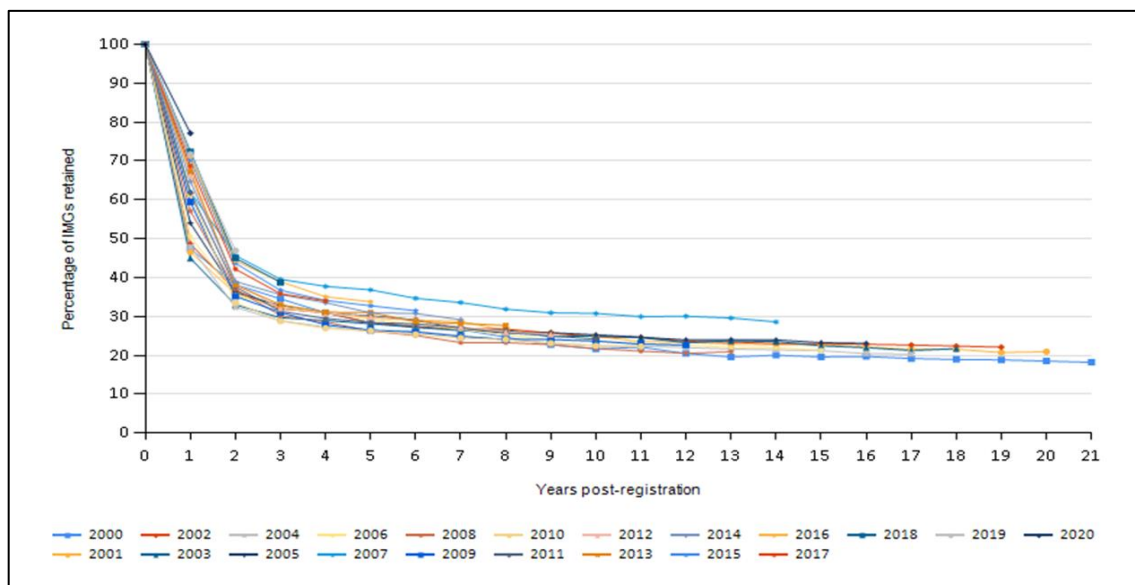
<sup>12</sup> OECD, Health Workforce Migration – Foreign-trained doctors by country of origin – Annual inflow (<https://stats.oecd.org/>).

## Retention of International medical graduates

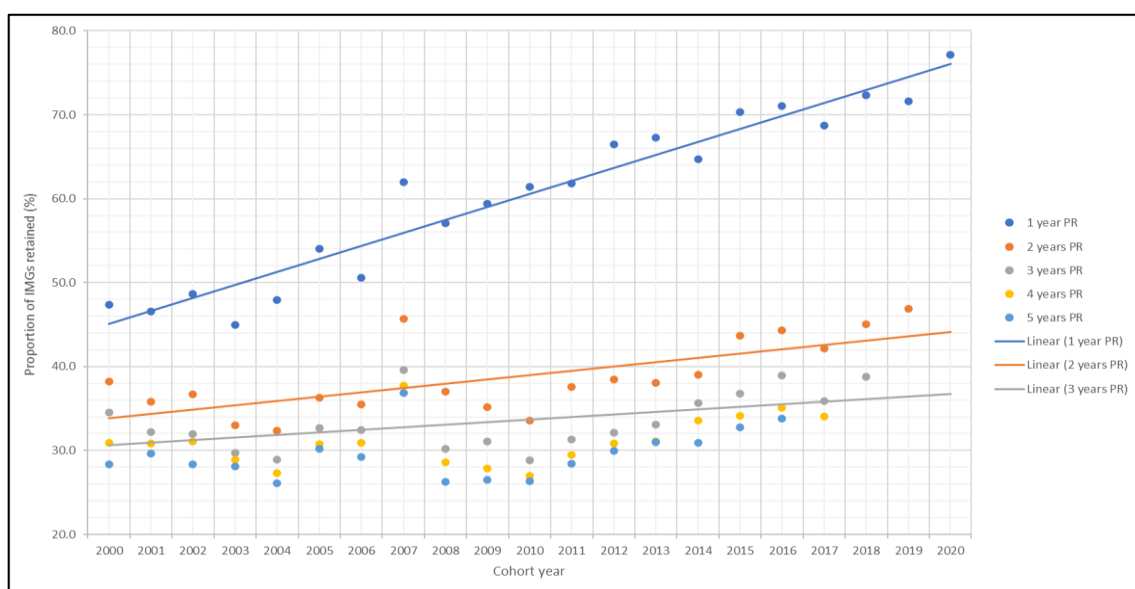
Most IMGs who register in New Zealand don't stay for long periods. Just over 60 percent leave in the first two years after they register. IMGs continue to leave in subsequent years until there are about 20 percent remaining. Retention at 1-year post-registration is improving significantly (see Figure 22), but the overall trend of IMGs leaving from 2 years post-registration onwards is largely stable.

Figure 16 and 22 show the overall retention rate for IMGs who registered in New Zealand between 2000 and 2020. See the method section on page 44 for information on how we grouped IMGs together into cohorts.

**Figure 16: Retention rate for IMGs (2000–2020)**



**Figure 17: Changes in IMG retention over time (1–5 years post-registration (PR))**



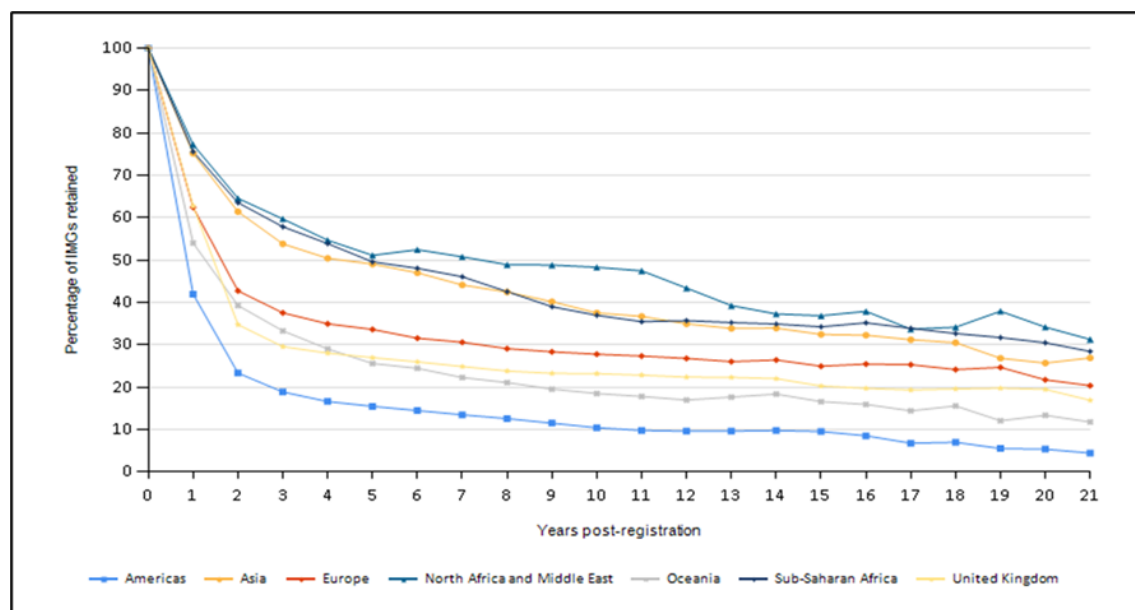
## Retention by region of qualification

Doctors from Africa, the Middle East and Asia are most likely to stay. We retain over three-quarters of doctors from these regions for one year and about 50 percent for a further four years. Over half of doctors from Africa and the Middle East are still in New Zealand up to seven years after they initially register.

Doctors from North America are least likely to stay in New Zealand followed by Oceania (mainly doctors from Australia and the Pacific), the United Kingdom (UK), and Europe. Only 42.0 percent of doctors from North America are retained one year after initial registration, dropping further to 23.3 percent in the second year. While around 62.7 percent of doctors from the UK are retained after one year, this then drops to just under 34.8 percent in the second year.

This suggests that doctors from the United Kingdom and North America are more likely to come to work in New Zealand temporarily or for short periods only (e.g., a working holiday). Doctors from Africa, the Middle East and Asia are more likely to relocate to New Zealand permanently.

**Figure 18: Retention of IMGs by region of qualification (2000-2021)**

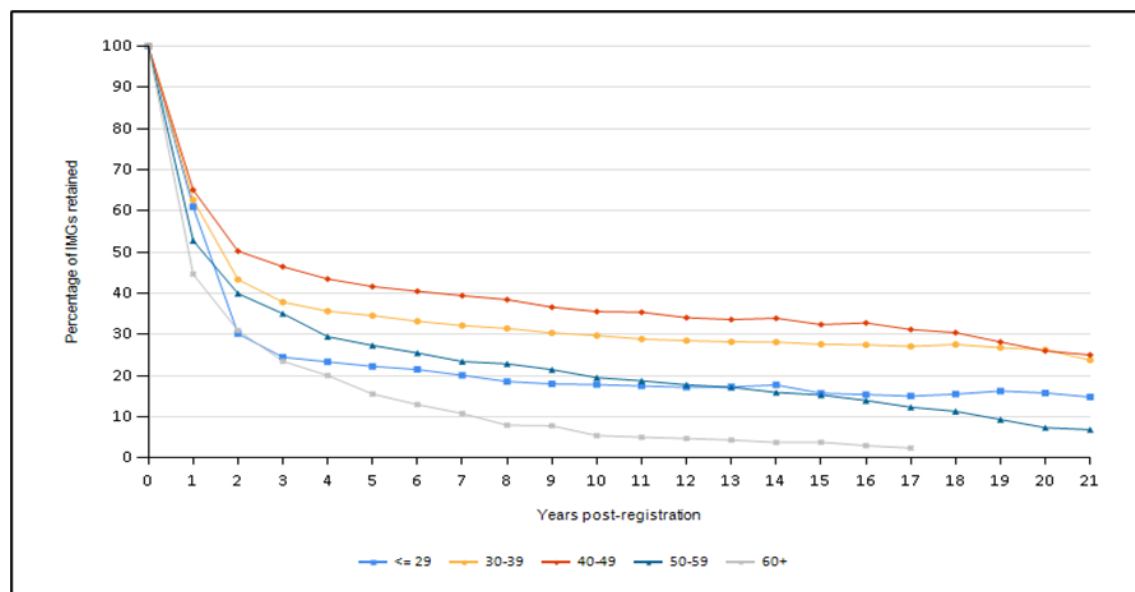


## Retention by age group and time since initial qualification

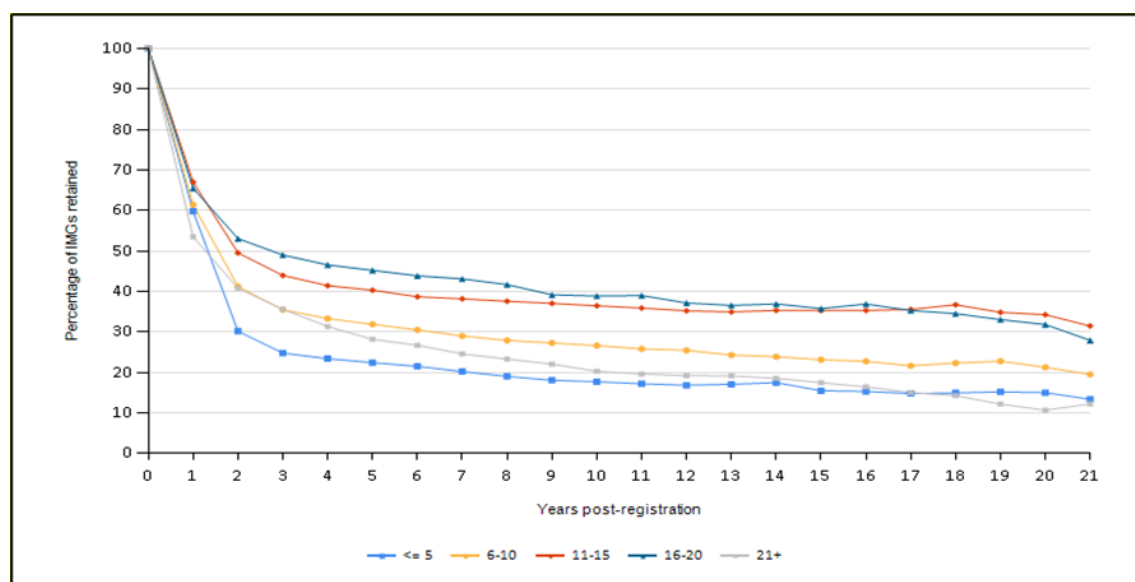
Doctors aged between 30 and 50 are more likely to stay compared to doctors in their 20s and those aged 60 and over. Similarly, doctors moving to New Zealand in the middle of their careers are more likely to stay compared with newer doctors in their first 10 years of practice.

This suggests that doctors aged under 30 are more likely to come to New Zealand for a short period of time compared with doctors in their 30s and 40s, who are more likely to be relocating permanently.

**Figure 19: Retention rates for IMGs by age group (2000–2021)**



**Figure 20: Retention rate for IMGs by time since initial qualification (2000–2021)**



## Data sources used in this publication

This report combines the results of the Medical Council of New Zealand workforce survey for 2022 with existing registration data. It also includes other non-register registration data collected from doctors as part of the initial registration process and when they renew their practising certificates each year.

### Register data and other non-register data

#### Register data

Register data are that used as part of the medical register. This includes doctors' scopes of practice, practising certificate dates, and qualification data.

#### Non-register registration data

Non-register registration data are collected from doctors when they renew their practising certificate each year or when doctors notify Council of changes during the year. This includes information on where doctors are employed, the level of their practice, the type of medicine, and whether they are in a vocational training programme.

#### Survey/workforce data

We ask doctors for workforce data as part of their application to renew their practising certificate. This section of the application collects detailed information from doctors about the work they are doing. This fills in the gaps not covered by register data and non-register registration data enriching these datasets.

## Representativeness of the survey data

The response rate for the 2021 survey was up from the previous year – 98.1 percent of doctors surveyed responded compared with 90.8 percent in 2021.

We believe the response is representative and that valid conclusions can be drawn from the data. We make this assertion based on the population size and demographic comparison of the survey data with register data.

### Survey statistical confidence – population size

A major factor in determining survey statistical confidence is the size of the population.

For our survey, the size of the population is the number of doctors on the register with current practising certificates – 18,963 as of 31 March 2022. For a population of this size, a response rate of 98.1 percent should provide 99 percent certainty<sup>13</sup>.

---

<sup>13</sup> GreatBrook, Survey Statistical Confidence: How Many is Enough?, <https://greatbrook.com/survey-statistical-confidence-how-many-is-enough/>.



## Demographic comparison – survey data versus register data

While the population size is important, the sample must accurately reflect the survey population. If it is, we can say that the survey data are representative.

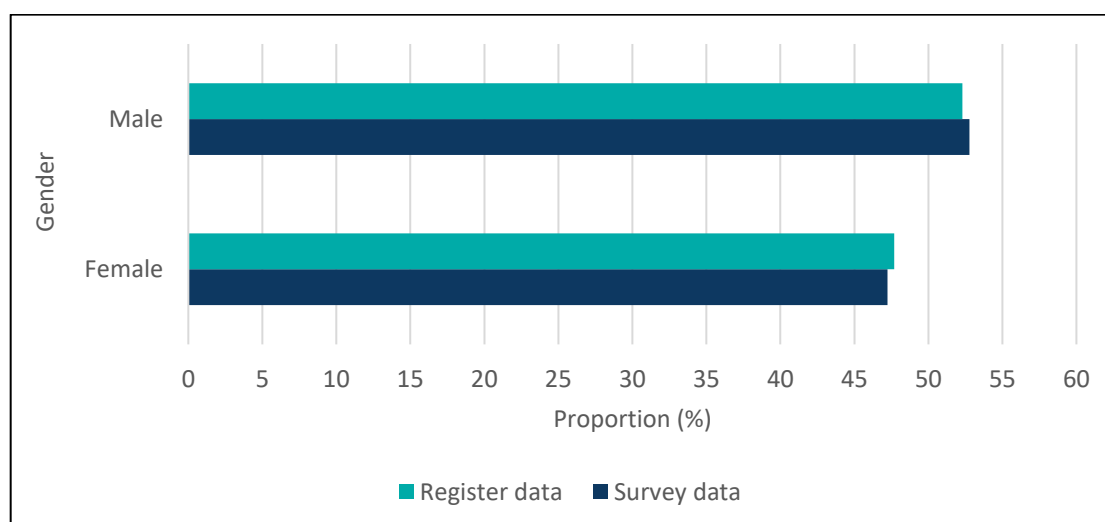
We compared the age and gender of those who responded to the survey with those on the medical register to test whether the survey data are representative. There were only very small differences in the breakdowns by age group and gender.

This further supports our conclusion that the survey response for 2021 is representative.

### Comparison by gender

Figure 21 illustrates that, when broken down by gender, the demographics of the two groups are effectively identical. In both cases, about 47 percent were female and 53 percent were male. As noted in the Gender section of the report on page 11, the number of doctors identifying as gender diverse was too small to report without breaching privacy standards.

**Figure 21: Comparison of survey respondents with doctors on the medical register as of 31 March 2022 by gender**



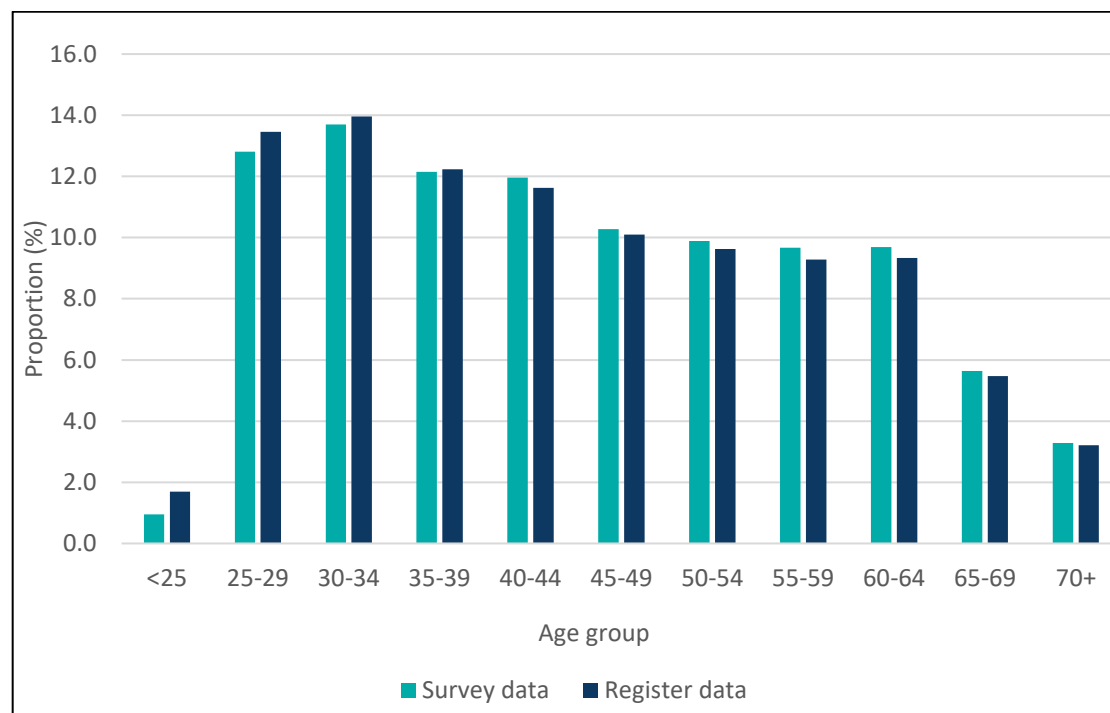
### Comparison by age group

Figure 22 and Table 16 show small differences between the two groups when they are broken down by age group.

There is a greater proportion of younger doctors (aged between 25 and 39) amongst doctors on the register, compared with those who responded to the survey. There is a corresponding larger proportion of doctors aged between 45 and 64 amongst survey respondents.

This suggests that doctors who come to New Zealand for short periods and are not asked to complete the workforce survey are, on average, younger.

**Figure 22: Comparison of survey respondents with doctors on the medical register as of 31 March 2022 by age group**



**Table 16: Summary of differences between survey respondents and doctors on the medical register as of 31 March 2022 by age group (selected age groups only)**

Age group	25–29	30–34	35–39	40–49	50–54	55–59	60–64
<i>Survey difference to register</i>	-0.7	-0.3	-0.1	0.5	0.3	0.4	0.4

### Comparison by country of qualification

There is little difference between the proportion of international medical graduates (IMGs) amongst doctors on the register versus doctors who responded to the survey (42.2 percent versus 41.7 percent). This small difference will be because we do not ask some IMGs who come to New Zealand for short periods to complete the survey.

## Survey method

### Delivery method

Since 2015 we have collected our survey data electronically. We made this change when we moved our practising certificate renewal process online. Doctors renew their practising certificates online through myMCNZ (<https://mymcnz.org.nz/>). This is the sixth survey we have administered electronically.

### Timing of the questionnaire

We ask doctors to renew their practising certificate (and complete the workforce survey) at one of four dates during the year, determined by the doctor's birthdate.

The 2021 survey covers doctors who renewed their practising certificate from December 2020, March 2021, June 2021, and September 2021.

Doctors can complete the survey up to 6 weeks before these dates. We collected all data within 3 months of a renewal period ending.

### Sampling frame

We ask doctors to complete the survey if they:

- hold a current general, provisional general, vocational, or provisional vocational scope of practice, and
- hold a current practising certificate or held one at some point in the previous year, and
- have a New Zealand address.

We do not ask doctors who are registered for specific short-term purposes (special-purpose scope of practice) to complete the survey.

### Responses to the survey

The response rate to the 2022 survey is 98.1 percent. We asked 18,410 doctors to complete the survey; 18,058 doctors responded. 17,499 doctors reported working in the previous year. The remaining 559 doctors reported that they did not work.

This response rate is higher than in 2020 (81.7 percent) and 2021 (90.8 percent). The increased response over the past two years is because we removed the ability for doctors to opt-out of the workforce questionnaire during the 2021 survey period. We made this change to comply with new legislation - the Health Practitioners Competence Assurance Amendment Act 2003 which was enacted in 2019.

This amendment requires us to provide the Director-General of Health with key workforce information on doctors<sup>14</sup>. Doctors must now complete the questionnaire but will be able to decline to answer specific questions – for example, ethnicity.

### Active doctors

The results in this report reflect the responses from active doctors. Active doctors are those who reported working four or more hours per week. There were 17,459 active doctors in 2022.

---

<sup>14</sup> Health Practitioners Competence Assurance Amendment Act 2019, s134A – <http://www.legislation.govt.nz/act/public/2003/0048/latest/LMS193179.html>

## Categories of data

We asked doctors completing the survey to report an employer type (e.g., public hospital), role type (e.g., registrar) and work type categories (e.g., cardiology) for up to three work sites.

## Use of registration data

We combined survey data with registration information to avoid asking doctors unnecessary questions and make it easier for them to respond to the survey. This information included the doctor's age, gender, registration date, and year and country of graduation.

We also used registration data in this report where it was more reliable than survey data.

## How we do geographical analysis

We assigned doctors' responses to a district health board (DHB) region, based on the address information we held for them at the time they responded to the survey.

We used Statistics New Zealand's Estimated Resident Population dataset as of 30 June 2021<sup>15</sup> for DHB and TLA populations.

## Ethnicity

Doctors can report up to three ethnicities. However, when we report data, we assign each doctor a single ethnicity using a simplified version of Statistics New Zealand's prioritisation standard. The priority order is:

1. Māori
2. Pacific Island (Pasifika)
3. Chinese
4. Indian
5. Other non-European
6. Other European
7. New Zealand European/Pākehā.

The ethnicity we use in analysis is the one reported by the doctor with the highest priority.

## Calculating retention rates

### Retention of New Zealand graduates

We calculate the retention rates for New Zealand graduates by comparing the list of graduates provided by the universities with the lists of doctors who held practising certificates in subsequent years.

### Retention of international medical graduates

We calculate the retention rates for IMGs by grouping them into year cohorts and then checking whether doctors in the cohort held a practising certificate in subsequent years. We express the retention rate as a percentage. If 100 doctors are in the cohort and 90 doctors hold a practising certificate in the following year, the retention rate is 90 percent.

---

<sup>15</sup> Statistics New Zealand: Estimated Resident Population as at 30 June 2016  
[http://archive.stats.govt.nz/browse\\_for\\_stats/population/estimates\\_and\\_projections/NationalPopulationEstimates\\_HOTPA30Jun16.aspx](http://archive.stats.govt.nz/browse_for_stats/population/estimates_and_projections/NationalPopulationEstimates_HOTPA30Jun16.aspx).

We include a doctor in the cohort for a year if they practised in New Zealand during that year but not in the previous year. For example, for an IMG to be included in the 2000 cohort, they must have practised in New Zealand in 2000 but not in 1999.

Inclusion in a group does not relate to the date of graduation in the IMG's home country.

## Explanation of terms used

### Active doctors

Active doctors are doctors who, by their own estimate, worked a total of at least 4 hours in medical (including non-clinical) work during a typical working week.

### Full-time equivalent (FTE)

We base proportional calculation of FTEs on a 40-hour week. For example, 60 hours = 1.5 FTE. On-call time is only included in FTE when the doctor works.

### General practitioner (GP)

A GP is any respondent who indicated working in the GP work role at one of their work sites. It does not specifically refer to a doctor holding the FRNZCGP qualification or a vocational scope of general practice. We sometimes need to use a different definition of GP. We will specify that we have done this in the text.

### House officer

House officers are doctors in their first 2-3 years out of medical school. Doctors in their first year out of medical school are sometimes known as interns or PGY1s.

### Hours on call

Hours on call are additional hours when doctors were on call but did not work.

### Hours worked

Hours worked at are those doctors report unless we specify otherwise.

We ask doctors to report the hours they work across all work sites during a typical working week. Alternatively, we ask doctors to report their most recent week if they cannot identify a typical week.

### International medical graduate (IMG)

A doctor who obtained their primary medical qualification in a country other than New Zealand. IMGs used to be called overseas-trained doctors.

Please take care when comparing the proportion of IMGs employed in New Zealand to the proportion in other countries – many countries define IMG differently from us.

### Main work site

The work site where the doctor spends most of their working hours.

### Medical officer

The Multi-Employer Collective Agreement (MECA) between the Association of Salaried Medical Specialists (ASMS) and DHBs<sup>16</sup> defines medical officer as “any medical practitioner who is registered under the Health Practitioners Competence Assurance Act 2003 ... who is not a medical specialist”. Medical officers were previously called medical officers of special scale (MOSS).

---

<sup>16</sup> <https://www.asms.org.nz/wp-content/uploads/2017/10/2017-2020-DHB-MECA-Signed.pdf>

### **Registrar**

A doctor who has at least 2 years of experience since graduation from medical school. Registrars are generally undertaking vocational training in their chosen specialty.

### **Registered within a vocational scope of practice**

Doctors registered in a vocational scope of practice have completed an approved or equivalent postgraduate training programme leading to the award of an approved or equivalent postgraduate qualification.

Registration within a vocational scope of practice was previously known as vocational registration.

### **Specialist**

This work role category is generally understood to require membership of the relevant specialist college (and registration within a vocational scope of practice). However, the data are self-reported and doctors who respond to the survey may apply the term more broadly.

General practice is a specialty, and GPs are specialists. However, we ask doctors working in general practice, urgent care, and other primary care disciplines to use separate work role categories to help us analyse the data.

### **Work role**

Work role category options for the survey are:

- GP
- primary care other than GP
- house officer
- registrar
- medical officer
- specialist/consultant
- other.

### **Work type**

Work type is the area of medicine or specialty that the doctor is working in. For example, internal medicine or general surgery.

## More information

### Requesting further information

Please contact Andrew Cullen, Council's Information Systems Analyst for further information about this report. You can send email requests to [workforce@mcnz.org.nz](mailto:workforce@mcnz.org.nz).

You can also get further information about the medical workforce from the Ministry of Health. Please see:

<https://www.health.govt.nz/nz-health-statistics/access-and-use/how-access-data>

Alternatively, you can contact the Ministry at the following address:

Analytical Services  
National Collections & Reporting  
National Health Board  
PO Box 1043  
Wellington  
New Zealand

Email: [data-enquiries@moh.govt.nz](mailto:data-enquiries@moh.govt.nz)

Website: [www.moh.govt.nz](http://www.moh.govt.nz)

Phone: +64 4 816 2850

### Referencing this report

Please use the following details when referencing this report:

- Author: Medical Council of New Zealand
- Title: The New Zealand Medical Workforce in 2022
- Subtitle: n/a
- Year: 2022
- Publisher: n/a – it is self-published
- Edition: n/a

## Appendix 1 – Changes in the medical workforce by work role

Table 17 shows the changes in the distribution of the workforce by work role over time.

**Table 17: Changes in the medical workforce**

Workforce role <sup>2</sup>	Proportion of active doctors (%) <sup>1</sup>						
	1980	1990	2000	2010	2020	2021	2022
General practitioner	37	38	37	31	26	25	25
House officer	12	11	10	8	9	10	10
Medical officer	3	3	3	5	4	4	4
Primary care other than GP	1	3	2	1	1	1	1
Registrar	11	13	14	15	18	19	20
Specialist	34	31	31	35	39	38	38
Other	1	2	2	3	2	2	2
No answer	-	-	0	2	-	-	-
<b>Total</b>	<b>100</b>	<b>100</b>	<b>100</b>	<b>100</b>	<b>100</b>	<b>100</b>	<b>100</b>

<sup>1</sup> Proportion of doctors who responded to the survey and reported working 4 or more hours per week.

<sup>2</sup> Work role at the doctor's main work site.



## Appendix 2 – Work type

**Table 18: Number of doctors by vocational scope for selected years (2005–2022)**

Vocational scope	Year <sup>1</sup>					
	2005	2010	2015	2020	2021	2022
Anaesthesia	488	577	737	879	921	945
Cardiothoracic surgery	19	23	28	31	32	34
Clinical genetics	6	7	12	16	16	18
Dermatology	50	56	63	77	78	76
Diagnostic and interventional radiology	266	303	448	570	629	714
Emergency medicine	88	135	224	350	397	408
Family planning and reproductive health	24	26	24	30	31	30
General practice	2,446	2,701	3,303	3,748	3,835	3,850
General surgery	227	235	262	298	313	318
Intensive care medicine	44	58	81	111	113	116
Internal medicine	656	761	958	1,222	1,292	1,333
Medical administration	12	15	25	30	29	29
Musculoskeletal medicine	20	22	20	24	24	28
Neurosurgery	18	20	23	24	24	24
Obstetrics and gynaecology	223	234	280	337	345	352
Occupational medicine	40	49	53	64	64	64
Ophthalmology	107	124	134	166	166	165
Oral and maxillofacial surgery	17	17	20	30	29	33
Orthopaedic surgery	211	237	273	311	316	322
Otolaryngology head and neck surgery	85	97	108	119	124	129
Paediatric surgery	15	14	19	24	25	24
Paediatrics	219	289	353	422	431	446
Pain medicine	-	-	23	34	38	39
Palliative medicine	32	42	54	71	76	79
Pathology	225	238	278	324	327	342
Plastic and reconstructive surgery	43	55	64	75	76	81
Psychiatry	425	489	559	671	665	689
Public health medicine	130	157	177	180	182	186
Radiation oncology	34	49	60	68	68	72
Rehabilitation medicine	11	16	24	27	28	28
Rural hospital medicine	-	26	105	128	132	143
Sexual health medicine	18	20	18	19	19	21
Sport and exercise medicine	12	19	26	33	36	37
Urgent care	103	119	136	249	268	286
Urology	51	54	64	68	74	72
Vascular surgery	20	26	33	33	32	33
<b>Total</b>	<b>6,389</b>	<b>7,310</b>	<b>9,069</b>	<b>10,863</b>	<b>11,255</b>	<b>11,566</b>

<sup>1</sup> Figures represent the number of doctors with vocational scope and current practising certificate as of 30 June of the year. Figures may differ slightly from those published in the 2021 report. This can occur when changes to a doctor's registration are backdated after the report data has been extracted.

## Appendix 3 – Age

Table 19 shows the changes in the average age of doctors holding a vocational scope between 2005 and 2022.

**Table 19: Average age of doctors on the register with a vocational scope (2005–2022)**

Vocational scope	Year					
	2005	2010	2015	2020	2021	2022
Anaesthesia	46	48	49	49	49	49
Cardiothoracic surgery	48	52	53	52	51	51
Clinical genetics	42	46	46	46	47	48
Dermatology	51	51	52	52	52	52
Diagnostic radiology	48	49	49	49	49	49
Emergency Medicine	41	43	45	46	46	46
Family planning	53	53	53	51	52	52
General Practice	49	51	53	53	53	53
General Surgery	49	51	51	52	51	52
Intensive Care Medicine	46	48	49	49	49	50
Internal Medicine	50	51	50	51	50	50
Medical Administration	53	56	58	57	57	57
Musculoskeletal Medicine	52	55	58	60	61	58
Neurosurgery	54	55	52	53	52	50
Obstetrics & Gynaecology	49	51	52	52	52	51
Occupational Medicine	50	53	55	58	58	58
Ophthalmology	49	50	51	51	52	52
Oral & Maxillofacial Surgery	45	48	52	49	51	51
Orthopaedic Surgery	49	50	52	52	52	52
Otolaryngology Head & Neck Surgery	49	51	53	54	54	54
Paediatric Surgery	49	53	55	54	54	54
Paediatrics	47	48	49	50	50	50
Pain Medicine	-	-	54	53	54	55
Palliative Medicine	50	54	56	52	52	53
Pathology	49	50	51	51	51	52
Plastic & Reconstructive Surgery	49	48	50	52	53	51
Psychiatry	48	50	52	54	55	54
Public Health Medicine	47	49	51	52	53	54
Radiation Oncology	46	47	49	51	51	50
Rehabilitation Medicine	51	51	51	53	51	52
Rural Hospital Medicine	-	47	49	51	51	50

Vocational scope	Year					
	2005	2010	2015	2020	2021	2022
Sexual Health Medicine	50	52	55	55	56	56
Sport medicine	46	46	47	48	49	49
Urgent Care	45	48	51	52	52	51
Urology	50	52	51	51	51	51
Vascular Surgery	48	50	50	54	55	55
<b>All doctors with a vocational scope</b>	<b>48</b>	<b>50</b>	<b>51</b>	<b>52</b>	<b>52</b>	<b>52</b>

## Appendix 4 – Ethnicity by work type

Table 20 shows the distribution of ethnicity for each work type at doctors' main work site.

**Table 20: Distribution of ethnicity by work type at main work site (%)**

Work type	Māori	Pacific Island (Pasifika)	Chinese	Indian	Other Non-European	Other European	NZ European/Pākehā	Refused	Total
Anaesthesia	2.9	1.0	6.9	4.2	7.7	23.0	50.0	4.3	100.0
Basic medical science	1.8	1.8	7.0	7.0	15.8	12.3	49.1	5.3	100.0
Clinical forensic medicine	0.0	0.0	0.0	0.0	33.3	33.3	33.3	0.0	100.0
Clinical genetics	10.5	0.0	5.3	0.0	0.0	21.1	63.2	0.0	100.0
Dermatology	1.0	0.0	11.5	6.3	7.3	20.8	50.0	3.1	100.0
Diagnostic & interventional radiology	2.5	0.9	7.7	6.3	10.4	18.1	50.2	3.9	100.0
Emergency medicine	3.8	1.7	4.3	4.6	9.4	33.3	37.4	5.5	100.0
Family planning & reproductive health	0.0	3.7	11.1	0.0	18.5	14.8	48.1	3.7	100.0
General practice	4.3	2.5	6.7	6.5	11.7	18.2	47.1	3.0	100.0
House officer rotations	13.0	3.6	8.9	6.2	15.7	8.7	40.8	3.1	100.0
Intensive care medicine	3.6	1.4	5.0	5.0	6.8	29.5	45.0	3.6	100.0
Internal medicine	3.7	1.7	9.2	7.6	14.8	18.6	40.8	3.7	100.0
Medical administration	8.2	1.4	1.4	2.7	5.5	11.0	69.9	0.0	100.0
Musculoskeletal medicine	3.1	3.1	3.1	6.3	6.3	9.4	65.6	3.1	100.0
Obstetrics & gynaecology	5.3	1.8	5.7	7.0	14.1	20.1	42.8	3.2	100.0
Occupational medicine	1.1	1.1	0.0	6.7	3.4	19.1	66.3	2.2	100.0
Ophthalmology	3.6	0.8	13.1	6.3	15.5	11.9	43.3	5.6	100.0
Other	8.3	1.7	3.5	2.8	9.0	16.7	53.5	4.5	100.0
Paediatrics	4.1	2.6	4.6	6.6	7.2	19.8	52.0	3.1	100.0
Palliative medicine	1.8	0.0	5.3	3.5	7.1	31.9	46.9	3.5	100.0
Pathology	1.1	1.8	7.7	5.8	13.1	19.7	47.1	3.6	100.0
Primary care other than GP	5.7	0.0	2.5	0.8	4.9	16.4	66.4	3.3	100.0
Psychiatry	4.4	1.7	2.8	8.8	13.7	26.6	38.8	3.2	100.0
Public health medicine	9.3	4.7	0.4	3.8	7.2	8.1	65.7	0.8	100.0
Radiation oncology	2.0	2.0	10.9	14.9	19.8	12.9	33.7	4.0	100.0
Rehabilitation medicine	7.1	0.0	11.9	11.9	31.0	26.2	11.9	0.0	100.0
Rural hospital medicine	3.5	0.9	0.9	4.3	8.7	23.5	55.7	2.6	100.0
Sexual health medicine	0.0	0.0	3.0	3.0	15.2	21.2	54.5	3.0	100.0
Sports medicine	13.0	1.9	3.7	0.0	11.1	13.0	55.6	1.9	100.0
Surgery: Cardiothoracic	4.4	1.5	4.4	22.1	14.7	20.6	27.9	4.4	100.0
Surgery: General	5.9	6.1	7.2	5.5	15.0	10.6	43.8	6.1	100.0
Surgery: Neurosurgery	1.8	1.8	14.0	8.8	15.8	21.1	31.6	5.3	100.0

Work type	Māori	Pacific Island (Pasifika)	Chinese	Indian	Other Non-European	Other European	NZ European/Pākehā	Refused	Total
Surgery: Oral & maxillofacial	0.0	2.6	10.3	7.7	2.6	20.5	56.4	0.0	100.0
Surgery: Orthopaedic	6.4	3.6	7.7	3.3	9.6	15.1	48.4	5.9	100.0
Surgery: Other subspecialties	2.5	2.5	6.6	2.5	9.9	17.4	53.7	5.0	100.0
Surgery: Otolaryngology head & neck	4.5	0.6	5.0	10.1	10.1	15.6	49.2	5.0	100.0
Surgery: Paediatric	4.9	7.3	0.0	7.3	7.3	34.1	36.6	2.4	100.0
Surgery: Plastic and reconstructive surgery	4.3	2.1	10.7	2.9	17.1	14.3	45.7	2.9	100.0
Surgery: Urology	5.6	1.6	5.6	7.2	11.2	14.4	51.2	3.2	100.0
Surgery: Vascular	7.4	2.9	4.4	4.4	19.1	22.1	35.3	4.4	100.0
Urgent care	4.1	2.8	5.7	6.1	16.3	22.0	38.6	4.5	100.0
<b>Total</b>	<b>4.6</b>	<b>2.2</b>	<b>6.6</b>	<b>6.2</b>	<b>11.8</b>	<b>19.2</b>	<b>45.7</b>	<b>3.7</b>	<b>100.0</b>

## Appendix 5 – Retention of New Zealand graduates

Table 21: Proportion of New Zealand graduates retained by cohort and year post-registration (%)

Graduate cohort	Year post-registration																					
	0	1	2	3	4	5	6	7	8	9	10	11	12	13	14	15	16	17	18	19	20	21
2000	100	100	99	87	81	83	83	82	79	76	72	64	64	62	63	64	64	64	65	64	63	64
2001	100	100	98	87	84	82	81	79	76	73	68	68	64	61	59	59	60	59	60	60	60	
2002	100	100	99	88	83	84	83	81	78	76	74	70	68	66	65	68	67	68	68	69		
2003	100	100	96	86	83	82	80	77	77	76	72	69	66	68	68	67	65	64	64			
2004	100	100	99	90	84	83	82	78	76	75	71	66	68	68	68	67	68	68				
2005	100	100	99	87	84	79	77	76	74	71	71	68	66	68	68	69	70					
2006	100	100	99	90	86	82	81	80	77	73	72	72	69	70	72	74						
2007	100	100	97	85	80	80	76	77	74	74	71	71	69	71	71							
2008	100	100	99	92	88	86	83	82	81	80	76	74	72	73								
2009	100	100	98	93	88	86	86	83	83	81	82	79	78									
2010	100	100	99	95	91	90	89	88	87	84	83	84										
2011	100	100	99	92	91	90	90	88	87	87	85											
2012	100	100	98	95	92	92	91	89	89	88												
2013	100	100	99	95	94	94	93	93	93													
2014	100	100	100	97	95	93	92	91														
2015	100	100	98	98	96	93	93															
2016	100	100	100	99	95	93																
2017	100	100	100	98	96																	
2018	100	100	99	98																		
2019	100	100	100																			
2020	100	100																				
2021	100																					
Average	-	-	99	92	88	87	85	83	81	78	75	71	68	68	67	67	66	65	64	64	62	64
Standard deviation	-	0.1	0.9	4.6	5.4	5.2	5.7	5.6	5.9	5.5	5.5	6.0	4.1	4.0	4.3	4.6	3.3	3.6	3.4	4.5	2.4	0.9

## Appendix 6 – List of tables and figures

### Tables

Table 1: Proportion of doctors by ethnic group (%) .....	6
Table 2: Proportion of doctors and New Zealand population by ethnic group .....	7
Table 3: Average age of doctors by ethnicity and gender .....	8
Table 4: Estimated yearly workforce growth and changes in composition .....	16
Table 5: Number of doctors by the vocational scope for selected years (2005–2022) .....	19
Table 6: Average age of doctors on the register with a vocational scope (2005–2022) .....	21
Table 7: Average hours worked by work role (2000–2022) .....	23
Table 8: Average of total hours worked, by age and gender .....	24
Table 9: Average hours worked, by gender and year (2005–2022) .....	24
Table 10: Doctors’ on-call hours, grouped in each work role (%) .....	25
Table 11: Proportion of doctors on call for 10 or more hours each week, by employer (%) .....	26
Table 12: Average on-call hours by work role (2000–2022) .....	26
Table 13: Distribution of doctors and GPs by region .....	28
Table 14: Proportion of percentage female, percentage IMG and average age .....	31
Table 15: Summary of workforce statistics – Auckland region .....	32
Table 16: Summary of differences between survey respondents and doctors on the medical register as of 31 March 2022 by age group (selected age groups only) .....	42
Table 17: Changes in the medical workforce .....	48
Table 18: Number of doctors by vocational scope for selected years (2005–2022) .....	49
Table 19: Average age of doctors on the register with a vocational scope (2005–2022) .....	50
Table 20: Distribution of ethnicity by work type at main work site (%) .....	52
Table 21: Proportion of New Zealand graduates retained by cohort and year post-registration (%) .....	54

### Figures

Figure 1: Ethnicity by age group (selected groups) .....	8
Figure 2: Proportion of ethnic groups by work role at main work site .....	9
Figure 3: Proportion of active doctors by gender (1980–2022) showing projected trend-forward to 2025. ....	11
Figure 4: Distribution of active doctors by age and gender .....	12
Figure 5: Vocational training area by gender (areas with more than 20 trainees) .....	13
Figure 6: Proportion of females by work role at main work site (1980–2022) .....	14
Figure 7: Proportion of doctors by work type and gender .....	15
Figure 8: Change in size of the active medical workforce compared to change in the size of the New Zealand population (2001–2022) .....	16
Figure 9: Age distribution of the active workforce (2000–2022) .....	17
Figure 10: Proportion of active doctors by work role (2000–2022) .....	18
Figure 11: Average age by work type at main work site (areas with more than 50 doctors) .....	20
Figure 12: Average hours worked by work type (areas with more than 50 respondents) .....	22
Figure 13: Proportion of IMGs by work role at the main worksite (1980–2022) .....	33
Figure 14: Proportion of IMGs by work type (areas with more than 50 doctors) .....	34
Figure 15: Graduate retention of class years 2000–2020 (5-year cohorts) .....	35
Figure 16: Retention rate for IMGs (2000–2020) .....	37

Figure 17: Changes in IMG retention over time (1–5 years post-registration (PR)) .....	37
Figure 18: Retention of IMGs by region of qualification (2000-2021).....	38
Figure 19: Retention rates for IMGs by age group (2000–2021).....	39
Figure 20: Retention rate for IMGs by time since initial qualification (2000–2021) .....	39
Figure 21: Comparison of survey respondents with doctors on the medical register as of 31 March 2022 by gender .....	41
Figure 22: Comparison of survey respondents with doctors on the medical register as of 31 March 2022 by age group .....	42