

# FUTURE GENERAL PRACTICE

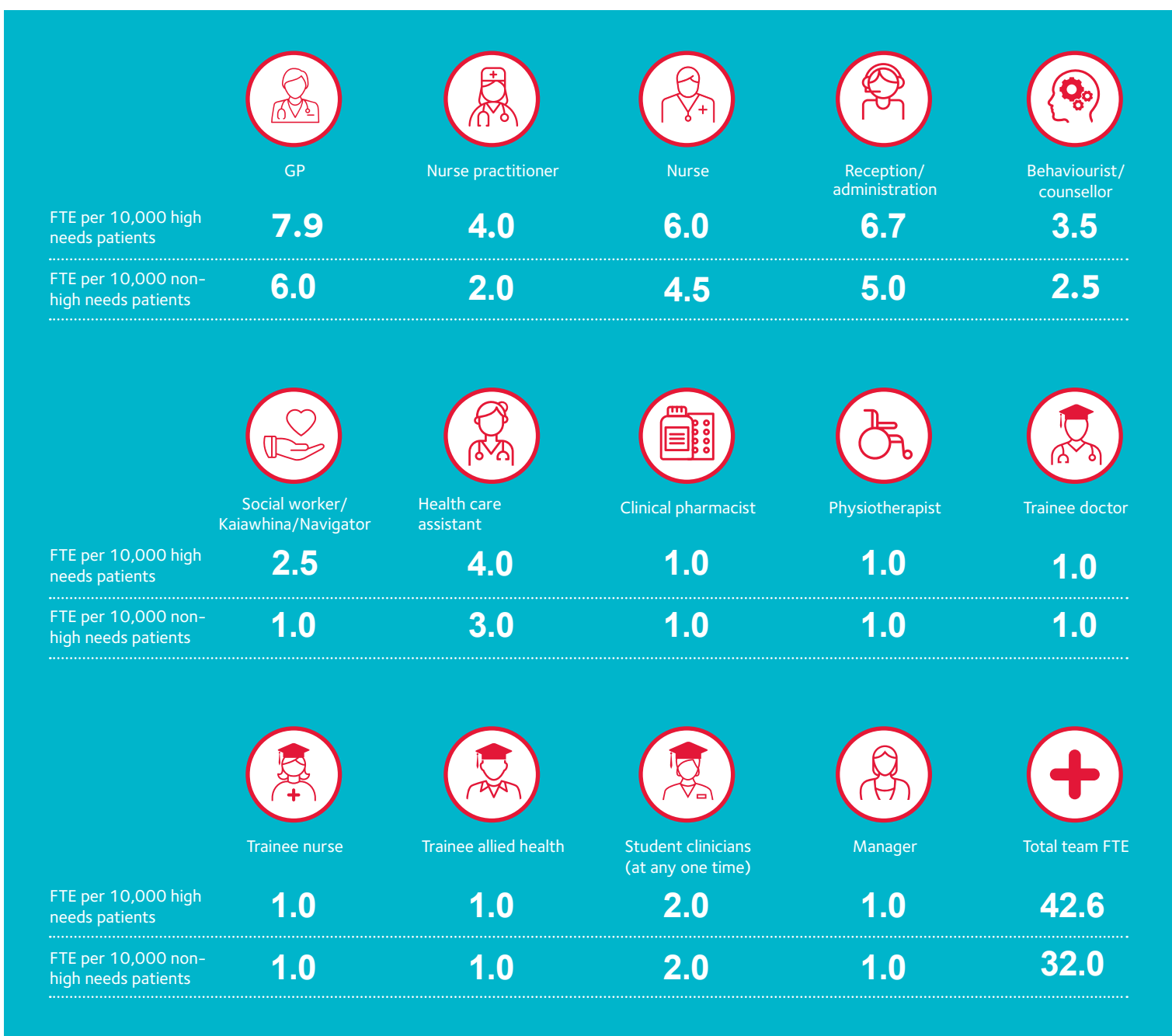
Workforce consistency for equitable outcomes

**UPDATED JULY 2020**

To provide comprehensive primary care services for New Zealanders a future potential model will need to:

- Respond to unmet needs in primary care
- Recognise changing roles and careers
- Build on increasing workforce capabilities
- Be provided consistently across NZ

A patient's enhanced primary care team could include whanau and the following roles with varying resources based on need:



GNZ hopes that this contribution will stimulate debate on the best future shape of primary healthcare in New Zealand.

**Read the report, discuss it with your team, and let's make this happen together!**